

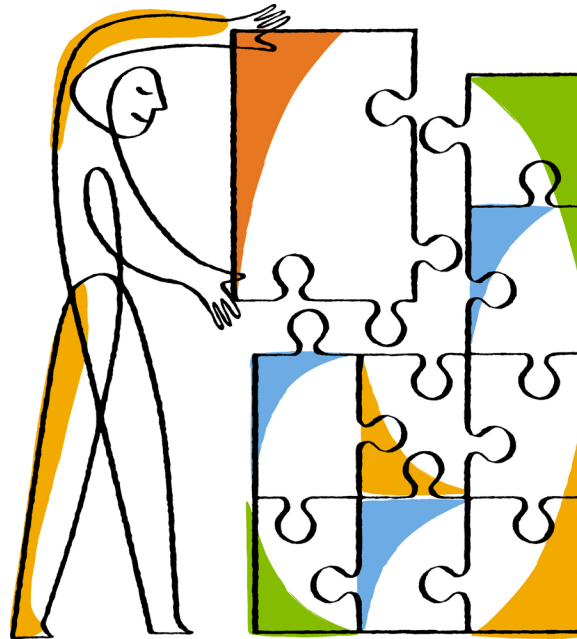


NetApp®

Updated for 8.3.2

Cloud ONTAP® 8.3 for Amazon Web Services

Upgrade Guide



NetApp, Inc.
495 East Java Drive
Sunnyvale, CA 94089
U.S.

Telephone: +1 (408) 822-6000
Fax: +1 (408) 822-4501
Support telephone: +1 (888) 463-8277
Web: www.netapp.com
Feedback: doccomments@netapp.com

Part number: 215-10489_A0
December 2015

Contents

Ways to upgrade Cloud ONTAP	4
Preparing to upgrade Cloud ONTAP	5
Version requirements for SnapMirror source and destination systems	5
Connecting to the Cloud ONTAP CLI	6
Suspending SnapMirror and SnapVault transfers	7
Verifying storage health	8
Backing up Cloud ONTAP system data	8
Choosing a location for the Cloud ONTAP software image	9
Obtaining the Cloud ONTAP software image	9
Upgrading Cloud ONTAP	10
Verifying Cloud ONTAP system status	11
Copyright information	12
Trademark information	13
How to send comments about documentation and receive update notifications	14
Index	15

Ways to upgrade Cloud ONTAP

You can upgrade Cloud ONTAP software by using the Cloud ONTAP CLI or by using OnCommand Cloud Manager. Using Cloud Manager is recommended because it automates the process.

This guide describes how to upgrade Cloud ONTAP using the CLI. For instructions about using Cloud Manager, see the [OnCommand Cloud Manager 2.1 Storage Management Guide](#).

Preparing to upgrade Cloud ONTAP

Before you upgrade Cloud ONTAP, you should prepare the system, choose an accessible location for the Cloud ONTAP system image, and then download and copy the image to that location.

Steps

1. [Review version requirements for SnapMirror source and destination systems](#) on page 5
If any of your systems have active SnapMirror relationships, you should review SnapMirror version requirements before you upgrade. The version requirements have changed starting with the 8.3 release.
2. [Connect to the Cloud ONTAP CLI](#) on page 6
The Cloud ONTAP CLI enables you to execute all administrative commands and is a good choice for advanced tasks or if you are more comfortable using the CLI. You can connect to the CLI using Secure Shell (SSH).
3. [Suspend SnapMirror and SnapVault transfers](#) on page 7
It is best to suspend SnapMirror and SnapVault transfers before you upgrade Cloud ONTAP to prevent failed transfers. You must suspend the transfers from the destination system.
4. [Verify that aggregates are online](#) on page 8
Your aggregates must be online before you start the upgrade.
5. [Back up Cloud ONTAP system and configuration data](#) on page 8
Before you upgrade a Cloud ONTAP system, you should create an EBS snapshot of the boot and root EBS volumes. Having these EBS snapshots enables you to recover your system if necessary.
6. [Choose a location for the Cloud ONTAP software image](#) on page 9
You must place the Cloud ONTAP software image on an HTTP server or FTP server that is accessible from the Cloud ONTAP instance. Cloud ONTAP accesses the software image when you run the `system node image update` command.
7. [Obtain the Cloud ONTAP software image](#) on page 9
The Cloud ONTAP software image is available from the NetApp Support site. After you download the image, you need to copy it to a location that is accessible from Cloud ONTAP instances.

Version requirements for SnapMirror source and destination systems

If any of your systems have active SnapMirror relationships, you should review SnapMirror version requirements before you upgrade. The version requirements have changed starting with the 8.3 release.

If you want to replicate data between Cloud ONTAP systems and clustered Data ONTAP systems running a version prior to 8.3, then the destination system must run a version that is equal to or later than that of the source system. This requirement applies to SnapMirror. It does not apply to SnapVault.

For example, replication from a Cloud ONTAP 8.3 system to a clustered Data ONTAP 8.2.3 system is not supported because the destination is running an earlier version. Conversely, replication from an 8.2.3 system to an 8.3 system is supported because the destination is running a later version.

Starting with clustered Data ONTAP 8.3, there are no version requirements for source and destination systems in SnapMirror relationships. The systems can run different versions, if they are both running 8.3 or later.

Connecting to the Cloud ONTAP CLI

The Cloud ONTAP CLI enables you to execute all administrative commands and is a good choice for advanced tasks or if you are more comfortable using the CLI. You can connect to the CLI using Secure Shell (SSH).

Before you begin

The host from which you use SSH to connect to Cloud ONTAP must have a network connection to the Cloud ONTAP instance. For example, you might need to use SSH from the Cloud Manager instance or from a jump host in AWS.

Steps

1. In Cloud Manager, identify the IP address of the cluster management interface:
 - a. On the **Working Environments** page, double-click the name of the instance.
 - b. In the **Cloud ONTAP Storage** pane, click the menu icon, and then click **Information**.
 - c. Copy the cluster management IP address:

Information

Cluster Management :	192.168.111.5
----------------------	---------------

Intercluster :	192.168.111.217
----------------	-----------------

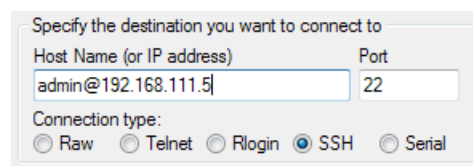
Node Management :	192.168.111.50
-------------------	----------------

Data (iscsi) :	192.168.111.219
----------------	-----------------

2. Use SSH to connect to the cluster management interface IP address using the admin account.

Example

The following image shows an example using PuTTY:



3. At the login prompt, enter the password for the admin account.

Example

```

Password: *****
COT2::>

```

Suspending SnapMirror and SnapVault transfers

It is best to suspend SnapMirror and SnapVault transfers before you upgrade Cloud ONTAP to prevent failed transfers. You must suspend the transfers from the destination system.

Steps

1. From the CLI, identify the relationships for which the system is the source or destination:

If you want to...	Use this command...
Identify relationships for which the system is the source	<code>snapmirror list-destinations</code>
Identify relationships for which the system is the destination	<code>snapmirror show</code>

2. For each destination volume, suspend future transfers:

```
snapmirror quiesce -destination-path destination
```

If there are no active transfers for the relationship, this command sets the status to `Quiesced`. If the relationship has active transfers, the status is set to `Quiescing` until the transfer is completed, and then the status becomes `Quiesced`.

Example

The following example shows transfers involving the destination volume `vol1` from SVM `svm_COT2` being quiesced:

```
COT2::> snapmirror quiesce -destination-path svm_COT2:vol1
```

3. Verify that all relationships are quiesced:

```
snapmirror show -status !Quiesced
```

This command displays any relationships that are *not* quiesced.

Example

The following example shows that all relationships are quiesced:

```
COT2::> snapmirror show -status !Quiesced
There are no entries matching your query.
```

4. If any SnapMirror or SnapVault relationships are currently transferring, wait or stop the transfers:

Option	Description
Wait for the transfers to complete before performing the upgrade.	Once each transfer completes, the relationship changes to the <code>Quiesced</code> status.

Option	Description
Stop the transfers by entering the following command: snapmirror abort - destination-path destination -h Note: You must use the <code>-foreground true</code> parameter if you are aborting load-sharing mirror transfers.	This command stops the transfer and restores the destination volume to the last Snapshot copy that was successfully transferred. The relationship is set to the Quiesced status.

Verifying storage health

Your aggregates must be online before you start the upgrade.

Step

1. From the CLI, verify that all aggregates are online:

```
storage aggregate show
```

Example

```
COT2::> storage aggregate show

Aggregate  Size Available Used% State  #Vols  Nodes  RAID Status
-----
aggr0     124.0GB   56.90GB   54% online    1 COT2-01  raid0,
normal
aggr1     442.9GB  431.9GB    3% online    3 COT2-01  raid0,
normal

2 entries were displayed.
```

If any aggregates are offline, use the `storage aggregate online` command to bring the aggregates online.

Backing up Cloud ONTAP system data

Before you upgrade a Cloud ONTAP system, you should create an EBS snapshot of the boot and root EBS volumes. Having these EBS snapshots enables you to recover your system if necessary.

About this task

You can create EBS snapshots of the root and boot disks by stopping and then restarting the Cloud ONTAP instance from Cloud Manager.

Using the AWS EC2 console to create the EBS snapshots is not recommended because of the following reasons:

- The console allows you to create the snapshots on a running instance (the Cloud ONTAP instance must be stopped).
- The snapshots are not tagged so that NetApp Support can use recovery tools to recover an instance.

Steps

1. On the **Resources** page for the working environment, click the menu icon, and then click **Turn Off Cloud ONTAP**.
2. Keep the option to create EBS snapshots enabled, and then click **Turn Off**.
3. After the instance stops, click the icon to restart the instance.

Related information

[Clustered Data ONTAP 8.3.2 man page: system configuration backup create - Create a configuration backup](#)

[Clustered Data ONTAP 8.3.2 man page: system configuration backup upload - Upload a configuration backup](#)

Choosing a location for the Cloud ONTAP software image

You must place the Cloud ONTAP software image on an HTTP server or FTP server that is accessible from the Cloud ONTAP instance. Cloud ONTAP accesses the software image when you run the `system node image update` command.

Steps

1. Set up an HTTP server or FTP server that can host the Cloud ONTAP software image.
If you have a VPN connection to your AWS Virtual Private Cloud (VPC), you can place the Cloud ONTAP software image on an HTTP server or FTP server in your own network. Otherwise, you need to place the file on an HTTP server or FTP server in AWS.
2. If you use your own security group for Cloud ONTAP instances, ensure that the outbound rules allow HTTP or FTP connections so Cloud ONTAP can access the software image.
Note: The predefined Cloud ONTAP security group allows outbound HTTP and FTP connections by default.

Obtaining the Cloud ONTAP software image

The Cloud ONTAP software image is available from the NetApp Support site. After you download the image, you need to copy it to a location that is accessible from Cloud ONTAP instances.

Steps

1. Go to the NetApp Support Site and download the Cloud ONTAP software image.
[NetApp Downloads: Software](#)
2. Copy the software image to the directory on the HTTP or FTP server from which the file will be served.

Upgrading Cloud ONTAP

You upgrade Cloud ONTAP by installing the software image from an HTTP or FTP server.

Steps

1. From the CLI, run the following command to download and install the software image:

```
system node image update -package location -setdefault true
```

See the man page for more details about the command.

[Clustered Data ONTAP 8.3.2 man page: system node image update - Perform software image upgrade/downgrade](#)

Example

The following command updates the software image from a software package located at `ftp://192.168.111.1/image.tgz`:

```
system node image update -package ftp://192.168.111.1/image.tgz -  
setdefault true
```

2. After the upgrade is complete, reboot the system:

```
system node reboot
```

The system boots the new image.

Verifying Cloud ONTAP system status

You should verify that upgraded systems are functioning as expected before you return them to production. This includes verifying the status of storage resources and resuming SnapMirror and SnapVault transfers if they were suspended before the upgrade.

Steps

1. Verify that the intended target release is installed and running:
`version`
2. Verify that all aggregates are online:
`storage aggregate show`
3. If you suspended SnapMirror and SnapVault transfers, enter the following command on the destination system to resume the transfers:
`snapmirror resume destination`

Copyright information

Copyright © 1994–2015 NetApp, Inc. All rights reserved. Printed in the U.S.

No part of this document covered by copyright may be reproduced in any form or by any means—graphic, electronic, or mechanical, including photocopying, recording, taping, or storage in an electronic retrieval system—without prior written permission of the copyright owner.

Software derived from copyrighted NetApp material is subject to the following license and disclaimer:

THIS SOFTWARE IS PROVIDED BY NETAPP "AS IS" AND WITHOUT ANY EXPRESS OR IMPLIED WARRANTIES, INCLUDING, BUT NOT LIMITED TO, THE IMPLIED WARRANTIES OF MERCHANTABILITY AND FITNESS FOR A PARTICULAR PURPOSE, WHICH ARE HEREBY DISCLAIMED. IN NO EVENT SHALL NETAPP BE LIABLE FOR ANY DIRECT, INDIRECT, INCIDENTAL, SPECIAL, EXEMPLARY, OR CONSEQUENTIAL DAMAGES (INCLUDING, BUT NOT LIMITED TO, PROCUREMENT OF SUBSTITUTE GOODS OR SERVICES; LOSS OF USE, DATA, OR PROFITS; OR BUSINESS INTERRUPTION) HOWEVER CAUSED AND ON ANY THEORY OF LIABILITY, WHETHER IN CONTRACT, STRICT LIABILITY, OR TORT (INCLUDING NEGLIGENCE OR OTHERWISE) ARISING IN ANY WAY OUT OF THE USE OF THIS SOFTWARE, EVEN IF ADVISED OF THE POSSIBILITY OF SUCH DAMAGE.

NetApp reserves the right to change any products described herein at any time, and without notice. NetApp assumes no responsibility or liability arising from the use of products described herein, except as expressly agreed to in writing by NetApp. The use or purchase of this product does not convey a license under any patent rights, trademark rights, or any other intellectual property rights of NetApp.

The product described in this manual may be protected by one or more U.S. patents, foreign patents, or pending applications.

RESTRICTED RIGHTS LEGEND: Use, duplication, or disclosure by the government is subject to restrictions as set forth in subparagraph (c)(1)(ii) of the Rights in Technical Data and Computer Software clause at DFARS 252.277-7103 (October 1988) and FAR 52-227-19 (June 1987).

Trademark information

NetApp, the NetApp logo, Go Further, Faster, AltaVault, ASUP, AutoSupport, Campaign Express, Cloud ONTAP, Clustered Data ONTAP, Customer Fitness, Data ONTAP, DataMotion, Fitness, Flash Accel, Flash Cache, Flash Pool, FlashRay, FlexArray, FlexCache, FlexClone, FlexPod, FlexScale, FlexShare, FlexVol, FPolicy, GetSuccessful, LockVault, Manage ONTAP, Mars, MetroCluster, MultiStore, NetApp Insight, OnCommand, ONTAP, ONTAPI, RAID DP, RAID-TEC, SANtricity, SecureShare, Simplicity, Simulate ONTAP, Snap Creator, SnapCenter, SnapCopy, SnapDrive, SnapIntegrator, SnapLock, SnapManager, SnapMirror, SnapMover, SnapProtect, SnapRestore, Snapshot, SnapValidator, SnapVault, StorageGRID, Tech OnTap, Unbound Cloud, and WAFL and other names are trademarks or registered trademarks of NetApp, Inc., in the United States, and/or other countries. All other brands or products are trademarks or registered trademarks of their respective holders and should be treated as such. A current list of NetApp trademarks is available on the web at <http://www.netapp.com/us/legal/netapptmlist.aspx>.

How to send comments about documentation and receive update notifications

You can help us to improve the quality of our documentation by sending us your feedback. You can receive automatic notification when production-level (GA/FCS) documentation is initially released or important changes are made to existing production-level documents.

If you have suggestions for improving this document, send us your comments by email to docomments@netapp.com. To help us direct your comments to the correct division, include in the subject line the product name, version, and operating system.

If you want to be notified automatically when production-level documentation is released or important changes are made to existing production-level documents, follow Twitter account @NetAppDoc.

You can also contact us in the following ways:

- NetApp, Inc., 495 East Java Drive, Sunnyvale, CA 94089 U.S.
- Telephone: +1 (408) 822-6000
- Fax: +1 (408) 822-4501
- Support telephone: +1 (888) 463-8277

Index

A

aggregates
 verifying state of [8](#), [11](#)

B

boot EBS volumes
 backing up before upgrading Cloud ONTAP systems [8](#)

C

CLI
 connecting to Cloud ONTAP [6](#)
 Cloud Manager
 upgrading Cloud ONTAP with [4](#)
 Cloud ONTAP
 connecting to the CLI [6](#)
 introduction to preparing to upgrade [5](#)
 upgrade methods [4](#)
 upgrading [10](#)
 verifying the version of [11](#)
 Cloud ONTAP software images
 choosing where to host [9](#)
 Cloud ONTAP system upgrades
 backing up before [8](#)
 comments
 how to send feedback about documentation [14](#)

D

destination systems, SnapMirror
 version requirements for upgrades [5](#)
 documentation
 how to receive automatic notification of changes to [14](#)
 how to send feedback about [14](#)

E

EBS boot volumes
 backing up before upgrading Cloud ONTAP systems [8](#)
 EBS root volumes
 backing up before upgrading Cloud ONTAP systems [8](#)

F

feedback
 how to send comments about documentation [14](#)
 FTP servers
 requirements for hosting Cloud ONTAP software images [9](#)

H

HTTP servers
 requirements for hosting Cloud ONTAP software images [9](#)

I

information
 how to send feedback about improving documentation [14](#)

N

network interfaces
 verifying the state of [11](#)

R

relationships, SnapMirror
 version requirements for upgrades [5](#)
 requirements, version
 for upgrading SnapMirror source and destination systems [5](#)
 root EBS volumes
 backing up before upgrading Cloud ONTAP systems [8](#)

S

SnapMirror
 resuming transfers [11](#)
 suspending transfers [7](#)
 version requirements for upgrades [5](#)
 SnapVault
 resuming transfers [11](#)
 suspending transfers [7](#)
 software image
 copying to an HTTP or FTP server [9](#)
 downloading [9](#)
 installing [10](#)
 software images, Cloud ONTAP
 choosing where to host [9](#)
 source systems, SnapMirror
 version requirements for upgrades [5](#)
 SSH
 using to access the Cloud ONTAP CLI [6](#)
 storage
 verifying health of [8](#), [11](#)
 suggestions
 how to send feedback about documentation [14](#)
 system data
 backing up before upgrading Cloud ONTAP systems [8](#)
 system upgrades, Cloud ONTAP
 backing up before [8](#)
 systems, SnapMirror source and destination
 version requirements for upgrades [5](#)

T

transfers

suspending [7](#)

twitter

how to receive automatic notification of
documentation changes [14](#)

U

upgrades

available methods for Cloud ONTAP [4](#)
version requirements for SnapMirror source and
destination systems [5](#)

upgrades, Cloud ONTAP system

backing up before [8](#)

V

version

verifying, Cloud ONTAP [11](#)

version requirements

for upgrading SnapMirror source and destination
systems [5](#)

volumes, EBS boot

backing up before upgrading Cloud ONTAP systems
[8](#)

volumes, EBS root

backing up before upgrading Cloud ONTAP systems
[8](#)