



ONTAP® 9

EMS Configuration Express Guide

December 2017 | 215-11195_F0
doccomments@netapp.com

Updated for ONTAP 9.3

 **NetApp**®

Contents

Deciding whether to use this guide	4
EMS configuration workflow	5
Deciding where to send important event notifications	5
Configuring important EMS events to send email notifications	6
Configuring important EMS events to forward notifications to a syslog server	6
Configuring SNMP traphosts to receive event notifications	7
Where to find additional information	8
Copyright information	9
Trademark information	10
How to send comments about documentation and receive update notifications	11
Index	12

Deciding whether to use the EMS Configuration Express Guide

This guide describes how to quickly configure ONTAP 9 to send important EMS (Event Management System) event notifications directly to an email address, a syslog server, or an Simple Management Network Protocol (SNMP) trap host so that you are immediately notified of system issues that require prompt attention.

To monitor the most important activities in your system, you must monitor the important EMS events.

Because important event notifications are not enabled by default, you must configure the EMS to send notifications to either an email address, a syslog server, or an SNMP trap host.

Use this guide to configure EMS event notifications for important events if the following are true:

- You are implementing one of the following scenarios:
 - You are setting up a new system running ONTAP 9 that does not have EMS configured.
 - You have an existing system running ONTAP 9 that does not have EMS configured.
 - You are upgrading to ONTAP 9 that does not have EMS configured.
 - You have just completed a transition from Data ONTAP operating in 7-Mode to ONTAP 9.
- You want to use best practices, not explore every available option.
- You do not want to read a lot of conceptual background.

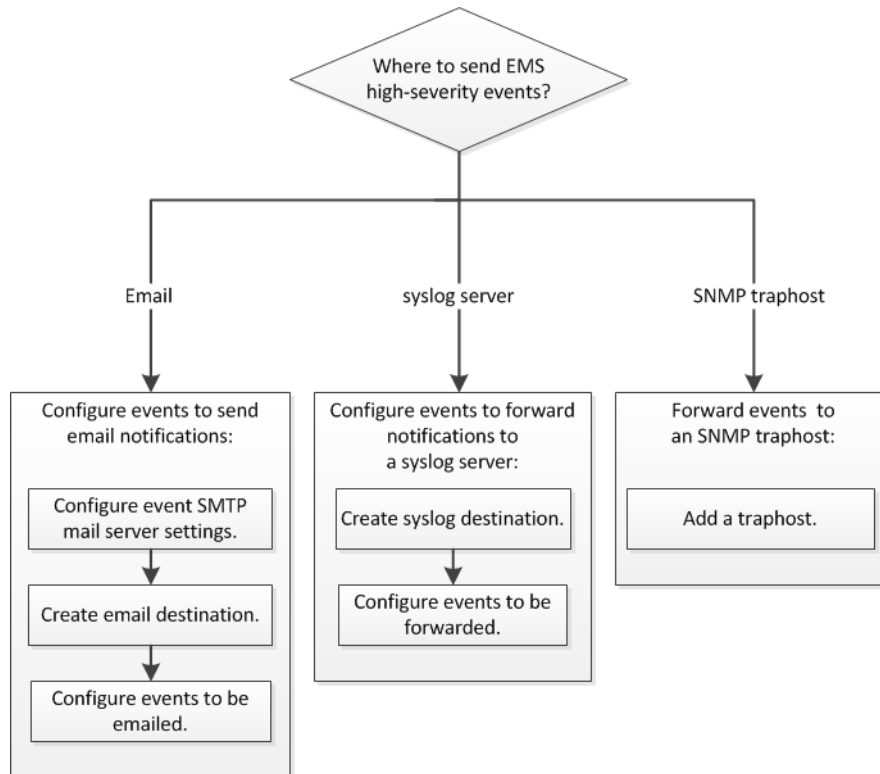
If this guide is not suitable for your situation, you should see the following documentation instead:

- [*System administration*](#)
Describes general system administration of a cluster, including the command-line interface (CLI), cluster access, node management, Storage Virtual Machine (SVM) setup, user account management, event monitoring, and performance evaluation.

Note: If the AutoSupport `noteto` parameter is configured with email addresses, they are automatically copied into EMS notification destinations when upgrading to ONTAP 9. A new EMS notification is also created that maps the `important-events` filter to these addresses. As a result, you will start receiving two email notifications for each callhome event until you remove the email addresses from the AutoSupport `noteto` parameter. You will also start receiving email notifications about other important events, in addition to the AutoSupport events originally configured.

EMS configuration workflow

You must configure important EMS event notifications to be sent either as email, forwarded to a syslog server, or forwarded to an SNMP traphost. This helps you to avoid system disruptions by taking corrective actions in a timely manner.



Deciding where to send important event notifications

Before you configure important EMS event notifications, you need to decide whether to send the notifications to an email address, a syslog server, or an SNMP traphost.

About this task

If your environment already contains a syslog server for aggregating the logged events from other systems, such as servers and applications, then it is easier to use that syslog server also for important event notifications from storage systems.

If your environment does not already contain a syslog server, then it is easier to use email for important event notifications.

If you already forward event notifications to an SNMP traphost, then you might want to monitor that traphost for important events.

- Set EMS to send event notifications.

If you want...	Refer to this...
The EMS to send important event notifications to an email address	Configuring important EMS events to send email notifications on page 6
The EMS to forward important event notifications to a syslog server	Configuring important EMS events to forward notifications to a syslog server on page 6
If you want the EMS to forward event notifications to an SNMP trap host	Configuring SNMP trap hosts to receive event notifications on page 7

Configuring important EMS events to send email notifications

To receive email notifications of the most important events, you must configure the EMS to send email messages for events that signal important activity.

Before you begin

DNS must be configured on the cluster to resolve the email addresses.

About this task

You can perform this task any time the cluster is running by entering the commands on the ONTAP command line.

Steps

1. Configure the event SMTP mail server settings:

```
event config modify -mail-server mailhost.your_domain -mail-from
cluster_admin@your_domain
```

2. Create an email destination for event notifications:

```
event notification destination create -name storage-admins -
email your_email@your_domain
```

3. Configure the important events to send email notifications:

```
event notification create -filter-name important-events -destinations
storage_admins
```

Configuring important EMS events to forward notifications to a syslog server

To log notifications of the most severe events on a syslog server, you must configure the EMS to forward notifications for events that signal important activity.

Before you begin

DNS must be configured on the cluster to resolve the syslog server name.

About this task

If your environment does not already contain a syslog server for event notifications, you must first create one. If your environment already contains a syslog server for logging events from other systems, then you might want to use that one for important event notifications.

You can perform this task any time the cluster is running by entering the commands on the ONTAP command line.

Steps

1. Create a syslog server destination for important events:

```
event notification destination create -name syslog-ems -syslog syslog-server-address
```

2. Configure the important events to forward notifications to the syslog server:

```
event notification create -filter-name important-events -destinations syslog-ems
```

Configuring SNMP traphosts to receive event notifications

To receive event notifications on an SNMP traphost, you must configure a traphost.

Before you begin

- SNMP and SNMP traps must be enabled on the cluster.
 - Note:** SNMP and SNMP traps are enabled by default.
- DNS must be configured on the cluster to resolve the traphost names.

About this task

If you do not already have an SNMP traphost configured to receive event notifications (SNMP traps), you must add one.

You can perform this task any time the cluster is running by entering the commands on the ONTAP command line.

Step

1. If your environment does not already have an SNMP traphost configured to receive event notifications, add one:

```
system snmp traphost add -peer-address snmp_traphost_name
```

All event notifications that are supported by SNMP by default are forwarded to the SNMP traphost.

Where to find additional information

There are other reference manuals to help you configure EMS events.

The following documentation provides more detailed information:

- [*System administration*](#)
Describes general system administration of a cluster, including the CLI interface, cluster access, node management, Storage Virtual Machine (SVM, formerly known as Vserver) setup, user account management, event monitoring, and performance evaluation.
- [*SNMP express configuration*](#)
Describes how to configure SNMP at the cluster management level, how to add communities, security users, and traphosts, and how to test the SNMP communication.
- [*NetApp Technical Report 4220: SNMP Support in Data ONTAP 8.2.x and Data ONTAP 8.3.x*](#)
Describes SNMP support in Data ONTAP, including a detailed comparison of SNMP support for Data ONTAP operating in 7-Mode and clustered Data ONTAP, and a list of all default events that are supported by SNMP traps.
- [*ONTAP concepts*](#)
Describes conceptual information about SNMP support in Data ONTAP, including a detailed comparison of SNMP support for Data ONTAP operating in 7-Mode and clustered Data ONTAP, and a list of all default events that are supported by SNMP traps.
- [*NetApp Documentation: Product Library A-Z*](#)
Lists all of the NetApp products. Select ONTAP 9 and look in the **More Resources** section to find the appropriate version of the ONTAP 9 EMS Event Catalog. The EMS event catalog provides detailed information for all of the EMS messages for the specified version of ONTAP 9 software.

Copyright information

Copyright © 2018 NetApp, Inc. All rights reserved. Printed in the U.S.

No part of this document covered by copyright may be reproduced in any form or by any means—graphic, electronic, or mechanical, including photocopying, recording, taping, or storage in an electronic retrieval system—without prior written permission of the copyright owner.

Software derived from copyrighted NetApp material is subject to the following license and disclaimer:

THIS SOFTWARE IS PROVIDED BY NETAPP "AS IS" AND WITHOUT ANY EXPRESS OR IMPLIED WARRANTIES, INCLUDING, BUT NOT LIMITED TO, THE IMPLIED WARRANTIES OF MERCHANTABILITY AND FITNESS FOR A PARTICULAR PURPOSE, WHICH ARE HEREBY DISCLAIMED. IN NO EVENT SHALL NETAPP BE LIABLE FOR ANY DIRECT, INDIRECT, INCIDENTAL, SPECIAL, EXEMPLARY, OR CONSEQUENTIAL DAMAGES (INCLUDING, BUT NOT LIMITED TO, PROCUREMENT OF SUBSTITUTE GOODS OR SERVICES; LOSS OF USE, DATA, OR PROFITS; OR BUSINESS INTERRUPTION) HOWEVER CAUSED AND ON ANY THEORY OF LIABILITY, WHETHER IN CONTRACT, STRICT LIABILITY, OR TORT (INCLUDING NEGLIGENCE OR OTHERWISE) ARISING IN ANY WAY OUT OF THE USE OF THIS SOFTWARE, EVEN IF ADVISED OF THE POSSIBILITY OF SUCH DAMAGE.

NetApp reserves the right to change any products described herein at any time, and without notice. NetApp assumes no responsibility or liability arising from the use of products described herein, except as expressly agreed to in writing by NetApp. The use or purchase of this product does not convey a license under any patent rights, trademark rights, or any other intellectual property rights of NetApp.

The product described in this manual may be protected by one or more U.S. patents, foreign patents, or pending applications.

RESTRICTED RIGHTS LEGEND: Use, duplication, or disclosure by the government is subject to restrictions as set forth in subparagraph (c)(1)(ii) of the Rights in Technical Data and Computer Software clause at DFARS 252.277-7103 (October 1988) and FAR 52-227-19 (June 1987).

Trademark information

Active IQ, AltaVault, Arch Design, ASUP, AutoSupport, Campaign Express, Clustered Data ONTAP, Customer Fitness, Data ONTAP, DataMotion, Fitness, Flash Accel, Flash Cache, Flash Pool, FlexArray, FlexCache, FlexClone, FlexGroup, FlexPod, FlexScale, FlexShare, FlexVol, FPolicy, Fueled by SolidFire, GetSuccessful, Helix Design, LockVault, Manage ONTAP, MetroCluster, MultiStore, NetApp, NetApp Insight, OnCommand, ONTAP, ONTAPI, RAID DP, RAID-TEC, SANSscreen, SANshare, SANtricity, SecureShare, Simplicity, Simulate ONTAP, Snap Creator, SnapCenter, SnapCopy, SnapDrive, SnapIntegrator, SnapLock, SnapManager, SnapMirror, SnapMover, SnapProtect, SnapRestore, Snapshot, SnapValidator, SnapVault, SolidFire, SolidFire Helix, StorageGRID, SyncMirror, Tech OnTap, Unbound Cloud, and WAFL and other names are trademarks or registered trademarks of NetApp, Inc., in the United States, and/or other countries. All other brands or products are trademarks or registered trademarks of their respective holders and should be treated as such. A current list of NetApp trademarks is available on the web.

<http://www.netapp.com/us/legal/netapptmlist.aspx>

How to send comments about documentation and receive update notifications

You can help us to improve the quality of our documentation by sending us your feedback. You can receive automatic notification when production-level (GA/FCS) documentation is initially released or important changes are made to existing production-level documents.

If you have suggestions for improving this document, send us your comments by email.

[*doccomments@netapp.com*](mailto:doccomments@netapp.com)

To help us direct your comments to the correct division, include in the subject line the product name, version, and operating system.

If you want to be notified automatically when production-level documentation is released or important changes are made to existing production-level documents, follow Twitter account @NetAppDoc.

You can also contact us in the following ways:

- NetApp, Inc., 495 East Java Drive, Sunnyvale, CA 94089 U.S.
- Telephone: +1 (408) 822-6000
- Fax: +1 (408) 822-4501
- Support telephone: +1 (888) 463-8277

Index

A

- additional information
 - where to find for configuring EMS event notifications [8](#)
- alert events
 - configuring EMS to send email notifications [6](#)
 - configuring to forward notifications to syslog server [6](#)
- AutoSupport
 - noteto configuration with email addresses [6](#)

C

- comments
 - how to send feedback about documentation [11](#)
- critical events
 - configuring EMS to send email notifications [6](#)
 - configuring to forward notifications to syslog server [6](#)

D

- documentation
 - how to receive automatic notification of changes to [11](#)
 - how to send feedback about [11](#)

E

- emergency events
 - configuring EMS to send email notifications [6](#)
 - configuring to forward notifications to syslog server [6](#)
- EMS
 - configuration workflow [5](#)
 - configuring to forward notifications to syslog server [6](#)
 - configuring to send email notifications [6](#)
 - configuring to send SNMP traps [7](#)
 - deciding where to send important event notifications [5](#)
- EMS notifications
 - deciding whether to use the EMS Configuration Express Guide to configure event notifications [4](#)
- event notifications
 - configuring EMS for email [6](#)
 - configuring for syslog server [6](#)
 - forwarding to SNMP traphosts [7](#)
- events
 - deciding where to send important notifications [5](#)
- express guides

- deciding where to send important EMS event notifications [5](#)
- EMS configuration workflow [5](#)
- where to find additional information for configuring EMS event notifications [8](#)

F

- feedback
 - how to send comments about documentation [11](#)

I

- important events
 - configuring EMS for email notifications [6](#)
 - configuring for syslog server [6](#)
 - forwarding to SNMP traphosts [7](#)
- information
 - how to send feedback about improving documentation [11](#)

S

- SNMP
 - deciding whether to use the EMS Configuration Express Guide [4](#)
- SNMP traphosts
 - configuring EMS for [7](#)
- suggestions
 - how to send feedback about documentation [11](#)

T

- traphosts, SNMP
 - configuring EMS for [7](#)
- Twitter
 - how to receive automatic notification of documentation changes [11](#)

V

- Vservers
 - See* SVMs

W

- workflows
 - EMS configuration [5](#)