



**SnapDrive® 5.3.1 for UNIX®**

# **Installation and Setup Guide for Linux®**

For Clustered Data ONTAP®

January 2017 | 215-11686\_B0  
[doccomments@netapp.com](mailto:doccomments@netapp.com)



# Contents

<b>Product overview .....</b>	<b>4</b>
<b>Deployment workflow .....</b>	<b>5</b>
<b>Preparing for deployment .....</b>	<b>6</b>
SnapDrive for UNIX license requirements .....	6
Supported configurations .....	6
Linux host requirements .....	7
<b>Installing SnapDrive for UNIX .....</b>	<b>8</b>
Verifying the installation .....	8
Performing post-installation tasks .....	9
<b>Verifying Linux host configurations using the configuration checker</b>	
<b>tool .....</b>	<b>10</b>
Importing data files .....	10
Verifying the supported configurations .....	10
<b>Provisioning storage .....</b>	<b>12</b>
Provisioning volumes .....	12
Provisioning RDM LUNs .....	12
<b>Connecting Linux hosts to storage systems .....</b>	<b>14</b>
<b>Creating Snapshot copies .....</b>	<b>15</b>
Creating a Snapshot copy .....	15
Verifying the Snapshot copy .....	15
<b>Where to go next .....</b>	<b>16</b>
<b>Copyright information .....</b>	<b>17</b>
<b>Trademark information .....</b>	<b>18</b>
<b>How to send comments about documentation and receive update</b>	
<b>notifications .....</b>	<b>19</b>
<b>Index .....</b>	<b>20</b>

## Product overview

---

SnapDrive for UNIX is a host-based storage and data management solution for UNIX environments. SnapDrive for UNIX simplifies data management, improves data availability, and increases the reliability of application data through simplified storage provisioning and file system consistent Snapshot copies.

You can use SnapDrive for UNIX as a stand-alone product or along with other SnapManager products that run on UNIX. SnapDrive for UNIX deployed along with SnapManager enables you to create application-consistent data backup.

### SnapDrive highlights

SnapDrive for UNIX enables you to simplify storage management tasks. Some of the tasks that you can perform using SnapDrive for UNIX are:

- Creating Snapshot copies using clustered Data ONTAP Snapshot technology.  
SnapDrive for UNIX enables you to create and delete Snapshot copies of a file system, volume group, host volume, or LUN and to clone storage entities from Snapshot copies.
- Provisioning and managing storage with little or no application or host downtime.  
SnapDrive for UNIX enables you to create and delete storage components, including disk groups, host volumes, file systems, and LUNs on host cluster environments. SnapDrive for UNIX also enables you to expand storage, connect storage to a host, and disconnect storage from a host.
- Providing role-based access control, which enables storage administrators to restrict the operations that SnapDrive users can perform, depending on their assigned roles.

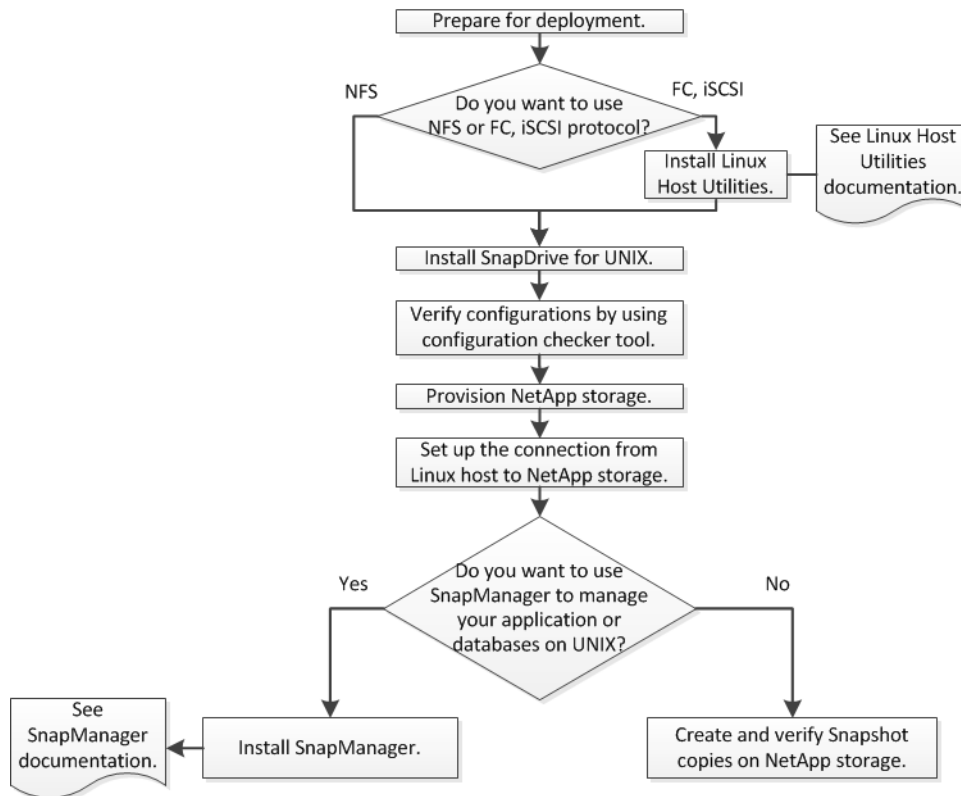
In addition to these major features, SnapDrive offers the following advantages:

- Enhanced clone-split operation
- Volume-based SnapRestore (VBSR)
- Command-line interface (CLI) options
- Data collection utility
- Support for storage system renaming
- Support for Fibre Channel RDM LUNs in Linux guest operating systems

## Deployment workflow

---

Before you can create Snapshot copies with SnapDrive, you must install Linux Host Utilities (if using FC or iSCSI protocol), install SnapDrive for UNIX, check the supported configurations for SnapDrive, provision the storage, and then set up connection from the Linux host to the NetApp storage system.



## Preparing for deployment

---

The hosts on which you install SnapDrive for UNIX must meet the specific software, hardware, browser, database, and operating system requirements. For more information about the requirements, see the Interoperability Matrix tool.

### Steps

1. Verify that you have the required licenses.
2. Verify SnapDrive support for your configuration.
3. Verify that your Linux host meets SnapDrive requirements.

### Related references

[SnapDrive for UNIX license requirements](#) on page 6

[Supported configurations](#) on page 6

[Linux host requirements](#) on page 7

### Related information

[NetApp Interoperability Matrix Tool](#)

## SnapDrive for UNIX license requirements

Before you install SnapDrive for UNIX, you must ensure that you have the appropriate licenses for the required software and protocols.

SnapDrive for UNIX license requirements are as follows:

License	Description	Where installed
SnapRestore	A required license that enables SnapDrive for UNIX to restore Snapshot copies.	On NetApp storage systems
FlexClone	An optional license for cloning Snapshot copies.	On NetApp storage systems
Protocols	Required for LUNs, the iSCSI or FC license.	On NetApp storage systems

## Supported configurations

You should use the NetApp Interoperability Matrix Tool (IMT) to verify SnapDrive support for your configuration before installing SnapDrive for UNIX.

### Related information

[NetApp Interoperability Matrix Tool](#)

## Linux host requirements

You must prepare the Linux host before you can install SnapDrive for UNIX.

- Download and install the Linux Host Utilities from the NetApp Support Site [NetApp Downloads: Software](#) if you are using the FC or iSCSI protocol.  
Verify that the Linux Host Utilities are installed successfully:

```
sanlun version
```

- Install the `sg3_utils` package in all Linux systems for the SnapDrive for UNIX commands to function properly.  
**Note:** You must ensure that `sg3_utils` and `sg3_utils-libs` are available for Red Hat Enterprise Linux (RHEL) and Oracle Enterprise Linux (OEL). The `sg3_utils` libraries are available in the `scsi*` package for SUSE Linux Enterprise Server (SLES) 10 and earlier and in the `sg3_utils*` package for SLES 11 and later.
- You need to download and install these library or binary packages if your host is a 64-bit Linux operating system and you are trying to install the 32-bit SnapDrive for UNIX.
  - 32-bit version of `glibc`, `libnl`, `libhba`, `libgcc` packages from the [Red Hat Enterprise Linux site](#). SnapDrive for UNIX installation fails if the 32-bit version of `glibc` is missing in the host system.
  - 32-bit binaries of `QConvergeConsoleCLI` from the [QLogic site](#) and change `qla2xxx64 /usr/lib64/libqlsdm.so` to `qla2xxx /usr/lib/libqlsdm.so` in the `/etc/hba.conf` file for QLogic HBAs if your host is a 64-bit Linux operating system and install 32-bit binaries of Emulex OneCommand Manager packages for Emulex HBA.
  - Install the `libHBAAPI` package or vendor-specific package if the transport protocol is FC for SnapDrive for UNIX to work on the host.
- Install the supported host Service Packs on the host before installing SnapDrive for UNIX.  
For more information about the supported service packs, see the Interoperability Matrix Tool.

### Related information

[NetApp Interoperability Matrix Tool](#)

[NetApp Support](#)

[Linux Unified Host Utilities 7.1 Installation Guide](#)

## Installing SnapDrive for UNIX

---

You can install SnapDrive for UNIX on the Linux host from the command-line interface.

### Steps

1. Download the SnapDrive for UNIX for Linux installer from the NetApp Support Site [NetApp Downloads: Software](#) and copy the file to the Linux host.
2. Log in to the host system as the root user.  
If you are running the installer file remotely and if the system configuration does not allow you to log in as the root user, use the `su` command to log in as root user.
3. Navigate to the directory on your Linux host to which you have copied the installer.
4. Install SnapDrive for UNIX:

```
rpm -ivh installer_file_name
```

### Result

The SnapDrive daemon starts automatically after the installation.

```
Starting snapdrive daemon: Successfully started daemon
```

## Verifying the installation

After you install SnapDrive for UNIX you must verify that the installation is successful. SnapDrive for UNIX installs multiple files on the host, such as executables, configuration files, uninstall files, diagnostic files, and man pages.

### Steps

1. Verify that the `snapdrive.conf` file is located at `/opt/NetApp/snapdrive/` folder.
2. Verify that the SnapDrive for UNIX executables for a Linux operating system are installed in the following locations:
  - `/opt/NetApp/snapdrive/bin/snapdrive`
  - `/opt/NetApp/snapdrive/bin/snapdrived`
3. Verify that the SnapDrive for UNIX diagnostic files are installed in the `/opt/NetApp/snapdrive/diag` folder.
4. Verify that the SnapDrive for UNIX man pages are installed in the `/opt/NetApp/snapdrive/docs` folder.
5. Verify the details of the installed configuration components in the `/var/log/sdconfcheck.out` file.



## Performing post-installation tasks

After the installation is complete, you must configure additional features and functions. You must install the server certificate and configure SnapDrive for UNIX to use a secure connection with the storage system and daemon service.

### Steps

1. Install the server certificate that is used by SnapDrive for UNIX in the `sdu-daemoncertificate-path=/opt/NetApp/snapdrive/snapdrive.pem` location if you are using a secure connection with the storage system and daemon service.

The certificate path is defined in the `sdu-daemoncertificate-path` configuration variable in the `snapdrive.conf` file.

2. Set `use-https-to-sdu-daemon=on` in the `snapdrive.conf` file to use HTTPS for a secure connection with the storage system and daemon service.

**Note:** SnapDrive 5.0 for UNIX and later versions support HTTPS for daemon communication. By default, this optional parameter is disabled.

3. Restart the SnapDrive daemon service:

```
snapdrived start
```

**Note:** You must restart the SnapDrive daemon every time you manually change the configuration file.

## Verifying Linux host configurations using the configuration checker tool

---

The configuration checker tool helps you to confirm that all the necessary components and correct versions are available in the Linux host before using SnapDrive for UNIX.

### Importing data files

You can download the latest support matrix data and update the configuration checker tool before running the tool, so that the tool lists the latest supported configuration for SnapDrive for UNIX. The configuration checker tool with the updated data file checks for the configurations supported by SnapDrive for UNIX and lists all the supported components in the system.

#### Steps

1. Download the latest data file from the ToolChest.
2. Import the latest data file:

```
sdconfcheck import -file ./confcheck_data.tar.gz
```

#### Related information

[NetApp Downloads: SnapDrive for UNIX Configuration Checker](#)

### Verifying the supported configurations

You can verify the supported configurations in SnapDrive for UNIX by examining the components in the host system (such as, operating system, version of software installed on the host, protocol, file systems on the host, and so on) and the value specified for each configuration parameter in the `snapdrive.conf` file.

#### Step

1. Verify the supported configurations:

```
sdconfcheck check
```

#### Example

```
[root@scspr0023764001 bin]# sdconfcheck check

NOTE: SnapDrive Configuration Checker is using the data file version
v12052013
  Please make sure that you are using the latest version.
  Refer to the SnapDrive for Unix Installation and Administration
  Guide for more details.

Detected Intel/AMD x64 Architecture
Detected Linux OS
Detected sg3_utils 1.28
Detected Kernel Version 2.6.32-358.el6.x86_64
Detected LVM_SUPPRESS_FD_WARNINGS has not set
Detected Multipathing version 0.4.9
Detected /etc/multipath.conf file not found
Detected Host OS Red Hat Enterprise Linux 6.0 Update 4
```

```
Detected NFSv3 FileSystem on Linux
Detected Software iSCSI on Linux
Detected NFSv4 Filesystem on Linux
Detected Ext4 File System
Detected Linux Native LVM2
Detected Linux Native MPIO

Did not find any supported cluster solutions.

Did not find any supported HU tool kits.

Trace-Enabled: on
Trace-Level: 7

Supported Configurations on this host by SDU Version 5.2.2
-----
Linux NFS Configuration
[root@scspr0023764001 bin]#
```

Check the components listed in the output and install or configure the missing components.

## Provisioning storage

---

SnapDrive for UNIX enables you to provision storage and connect to an existing storage system by using command-line options from the host. You can also provision storage using Data ONTAP.

### Provisioning volumes

Data ONTAP enables you to provision storage by creating a volume on the storage system and mounting the volume to the host with NFS protocol enabled.

#### Related information

[\*Data ONTAP 8.2 Storage Management Guide For 7-Mode\*](#)

### Provisioning RDM LUNs

SnapDrive for UNIX enables you to create and provision RDM LUNs with the FC protocol enabled on a guest operating system in a VMware virtual environment. You can also provision RDM LUNs by using ONTAP.

#### Before you begin

- NetApp Virtual Storage Console (VSC) must be installed and configured with VMware vCenter™.
- The backup and recovery capability of NetApp Virtual Storage Console for VMware vSphere™ must be installed in the Windows operating system that is registered with vCenter™.
- `default-transport` must be set as `fc` in the `snapdrive.conf` file, and the SnapDrive for UNIX daemon must be restarted.

#### Steps

1. Configure the guest operating system for creating an RDM LUN:  

```
snapdrive config set -viadmin user viadmin_name
```

  - `user` is the name of the virtual interface system.
  - `viadmin_name` is the name of the IP address of the virtual interface system.
2. Verify the login information for Virtual Storage Console:  

```
snapdrive config list
```

This command displays the user name or virtual interface that is specified in SnapDrive for UNIX.
3. Verify that the guest operating system can communicate with the storage system:  

```
storage show -all command
```
4. Create an RDM LUN on the storage system:  

```
snapdrive storage create -lun long_lun_name -lunsize size_of_the_lun
```
5. Connect the RDM LUN to the host:  

```
snapdrive storage connect -lun long_lun_name
```

**Related information**

*[Virtual Storage Console 6.0 for VMware vSphere Installation and Administration Guide](#)*  
*[Data ONTAP 8.2 Storage Management Guide For 7-Mode](#)*

## Connecting Linux hosts to storage systems

---

For successful SnapDrive for UNIX operations, you must set up your Storage Virtual Machines (SVMs, formerly known as Vservers)

### Before you begin

- You must have assigned the aggregates that contain volumes to the SVMs aggregate list to execute the SnapDrive for UNIX operations.
- You must have one or more SVMs created to serve data from the cluster.  
The IP address of the SVM management logical interface (LIF) must be mapped with the SVM name, either in the Domain Name Service (DNS) or in the `/etc/hosts` file.

### Steps

1. If you are running ONTAP 8.2.2 or earlier, create a user on the cluster management server, also called adminSVM:

```
snapdrive config set -cserver csadmin_name cserver_name
```

If you are running ONTAP 8.2.3 or later, then skip this step.

2. Create a user on the data SVM:

```
snapdrive config set  
vsadmin_name Vserver_name
```

3. Verify that the SVM is configured in SnapDrive for UNIX:

```
snapdrive config list
```

The command lists the user name and IP address of the cluster management server and data SVM.

4. Modify the management interface path to the data interface path of the SVM:

```
snapdrive config set -mgmtpath management_interface_path  
data_interface_path
```

5. Verify that all data and management interfaces are configured properly:

```
snapdrive config list -mgmtpath
```

## Creating Snapshot copies

---

SnapDrive for UNIX when deployed as a stand-alone product uses NetApp Snapshot technology, which enables you to create and manage Snapshot copies of the host data. You can use the Snapshot copies to restore the data.

### Related tasks

[Creating a Snapshot copy](#) on page 15

[Verifying the Snapshot copy](#) on page 15

## Creating a Snapshot copy

You can create Snapshot copies of multiple file systems, host volumes, LUNs, or disk groups by using a single command while using storage area network (SAN) and NFS volumes in network-attached storage (NAS).

### Step

1. Create a Snapshot copy:

```
snapdrive snap create -fs file_spec -snapname snapshot_copy_name
```

## Verifying the Snapshot copy

You can verify your Snapshot copy by restoring the data.

For more information, see [SnapDrive 5.3 for UNIX Administration Guide for Linux](#).

## Where to go next

---

After configuring SnapDrive for UNIX and creating a Snapshot copy, you can perform a restore operation, connect a Snapshot copy, and create a clone. You can also explore other important SnapDrive features, such as role-based access control (RBAC), enhanced clone-splitting, and volume-based SnapRestore.

You can find more information about these features, as well as release-specific information about SnapDrive for UNIX, in the following documentation, available on the NetApp Support Site:

- [\*SnapDrive 5.3 for UNIX Administration Guide for Linux\*](#)  
Describes how to configure various features on SnapDrive for UNIX after the deployment is complete. Topics include how to configure igroups, configure SnapDrive for UNIX, configure RBAC, and use the data collection utility to diagnose issues with SnapDrive for UNIX.
- [\*SnapDrive 5.3 for UNIX Release Notes \(AIX, Linux, and Solaris\)\*](#)  
Describes new features, important cautions, known problems, and limitations for SnapDrive 5.3 for UNIX.
- [\*SnapManager 3.4 for Oracle Installation and Setup Guide for UNIX for Clustered Data ONTAP\*](#)  
Describes initial tasks you must perform to deploy SnapManager for Oracle with clustered-mode in UNIX environment. Topics include how to install and configure the product and how to back up the databases.
- NetApp Technical Report 4212: Best Practice Guide for SnapDrive for UNIX 5.3  
Describes SnapDrive for UNIX best practices.



## Copyright information

---

Copyright © 1994–2017 NetApp, Inc. All rights reserved. Printed in the U.S.

No part of this document covered by copyright may be reproduced in any form or by any means—graphic, electronic, or mechanical, including photocopying, recording, taping, or storage in an electronic retrieval system—without prior written permission of the copyright owner.

Software derived from copyrighted NetApp material is subject to the following license and disclaimer:

THIS SOFTWARE IS PROVIDED BY NETAPP "AS IS" AND WITHOUT ANY EXPRESS OR IMPLIED WARRANTIES, INCLUDING, BUT NOT LIMITED TO, THE IMPLIED WARRANTIES OF MERCHANTABILITY AND FITNESS FOR A PARTICULAR PURPOSE, WHICH ARE HEREBY DISCLAIMED. IN NO EVENT SHALL NETAPP BE LIABLE FOR ANY DIRECT, INDIRECT, INCIDENTAL, SPECIAL, EXEMPLARY, OR CONSEQUENTIAL DAMAGES (INCLUDING, BUT NOT LIMITED TO, PROCUREMENT OF SUBSTITUTE GOODS OR SERVICES; LOSS OF USE, DATA, OR PROFITS; OR BUSINESS INTERRUPTION) HOWEVER CAUSED AND ON ANY THEORY OF LIABILITY, WHETHER IN CONTRACT, STRICT LIABILITY, OR TORT (INCLUDING NEGLIGENCE OR OTHERWISE) ARISING IN ANY WAY OUT OF THE USE OF THIS SOFTWARE, EVEN IF ADVISED OF THE POSSIBILITY OF SUCH DAMAGE.

NetApp reserves the right to change any products described herein at any time, and without notice. NetApp assumes no responsibility or liability arising from the use of products described herein, except as expressly agreed to in writing by NetApp. The use or purchase of this product does not convey a license under any patent rights, trademark rights, or any other intellectual property rights of NetApp.

The product described in this manual may be protected by one or more U.S. patents, foreign patents, or pending applications.

**RESTRICTED RIGHTS LEGEND:** Use, duplication, or disclosure by the government is subject to restrictions as set forth in subparagraph (c)(1)(ii) of the Rights in Technical Data and Computer Software clause at DFARS 252.277-7103 (October 1988) and FAR 52-227-19 (June 1987).

## Trademark information

---

Active IQ, AltaVault, Arch Design, ASUP, AutoSupport, Campaign Express, Clustered Data ONTAP, Customer Fitness, Data ONTAP, DataMotion, Fitness, Flash Accel, Flash Cache, Flash Pool, FlexArray, FlexCache, FlexClone, FlexGroup, FlexPod, FlexScale, FlexShare, FlexVol, FPolicy, Fueled by SolidFire, GetSuccessful, Helix Design, LockVault, Manage ONTAP, MetroCluster, MultiStore, NetApp, NetApp Insight, OnCommand, ONTAP, ONTAPI, RAID DP, RAID-TEC, SANscreen, SANshare, SANtricity, SecureShare, Simplicity, Simulate ONTAP, Snap Creator, SnapCenter, SnapCopy, SnapDrive, SnapIntegrator, SnapLock, SnapManager, SnapMirror, SnapMover, SnapProtect, SnapRestore, Snapshot, SnapValidator, SnapVault, SolidFire, SolidFire Helix, StorageGRID, SyncMirror, Tech OnTap, Unbound Cloud, and WAFL and other names are trademarks or registered trademarks of NetApp, Inc., in the United States, and/or other countries. All other brands or products are trademarks or registered trademarks of their respective holders and should be treated as such. A current list of NetApp trademarks is available on the web.

<http://www.netapp.com/us/legal/netapptmlist.aspx>

## How to send comments about documentation and receive update notifications

---

You can help us to improve the quality of our documentation by sending us your feedback. You can receive automatic notification when production-level (GA/FCS) documentation is initially released or important changes are made to existing production-level documents.

If you have suggestions for improving this document, send us your comments by email.

[doccomments@netapp.com](mailto:doccomments@netapp.com)

To help us direct your comments to the correct division, include in the subject line the product name, version, and operating system.

If you want to be notified automatically when production-level documentation is released or important changes are made to existing production-level documents, follow Twitter account @NetAppDoc.

You can also contact us in the following ways:

- NetApp, Inc., 495 East Java Drive, Sunnyvale, CA 94089 U.S.
- Telephone: +1 (408) 822-6000
- Fax: +1 (408) 822-4501
- Support telephone: +1 (888) 463-8277

# Index

## C

- comments
  - how to send feedback about documentation [19](#)
- configuration
  - workflow [5](#)
- configuration checker
  - overview [10](#)
- connecting
  - Linux hosts to storage systems [14](#)
  - RDM LUNs [12](#)
- creating
  - RDM LUNs [12](#)
  - Snapshot copies [15](#)

## D

- data files
  - downloading [10](#)
  - importing [10](#)
- deployment
  - workflow [5](#)
- documentation
  - additional information [16](#)
  - how to receive automatic notification of changes to [19](#)
  - how to send feedback about [19](#)

## F

- features and benefits
  - overview of [4](#)
- feedback
  - how to send comments about documentation [19](#)

## H

- host requirements
  - Linux Host Utilities [7](#)

## I

- IMT
  - using to verify support for system configurations [6](#)
  - See also* Interoperability Matrix
- information
  - how to send feedback about improving documentation [19](#)
- installation
  - verification of success [8](#)
- installing
  - SnapDrive for UNIX [8](#)
  - workflow [5](#)
- Interoperability Matrix
  - verifying your configuration [6](#)
  - See also* IMT

## L

- licenses required
  - for FlexClone [6](#)
  - for protocols [6](#)
  - for SnapDrive for UNIX [6](#)
  - for SnapRestore [6](#)
- Linux Host Utilities
  - required for SnapDrive for UNIX [7](#)
- Linux hosts
  - connecting to storage systems [14](#)
- LUNs, RDM
  - connecting to a host [12](#)
  - creating [12](#)
  - provisioning [12](#)

## P

- post-installation
  - SnapDrive for UNIX [9](#)
- product overview
  - features and benefits [4](#)
- provisioning
  - RDM LUNs [12](#)
  - storage [12](#)
  - volumes [12](#)

## R

- raw device mapping LUNs
  - See* RDM LUNs
- RDM LUNs
  - connecting to a host [12](#)
  - creating [12](#)
  - provisioning [12](#)

## S

- SnapDrive
  - supported configurations [10](#)
- SnapDrive configurations
  - verifying support [10](#)
- SnapDrive for UNIX
  - deployment workflow [5](#)
  - features and benefits [4](#)
  - installing [8](#)
  - license requirements [6](#)
  - Linux host requirements [7](#)
  - preparing to install [6](#)
  - storage provisioning [12](#)
- Snapshot copies
  - creating [15](#)
- storage systems
  - connecting Linux hosts to [14](#)
- suggestions
  - how to send feedback about documentation [19](#)
- support
  - verifying system configurations [6](#)

supported configurations

    verifying [10](#)

SVMs

    setting up for connecting Linux hosts to storage  
    systems [14](#)

system configurations

    verifying support for [6](#)

## T

Twitter

    how to receive automatic notification of  
    documentation changes [19](#)

## V

verification

    of successful installation [8](#)

verifying

    Snapshot copies [15](#)

volumes, storage

    creating [12](#)

    provisioning [12](#)

Vservers

*See* SVMs

## W

workflow

    deployment [5](#)