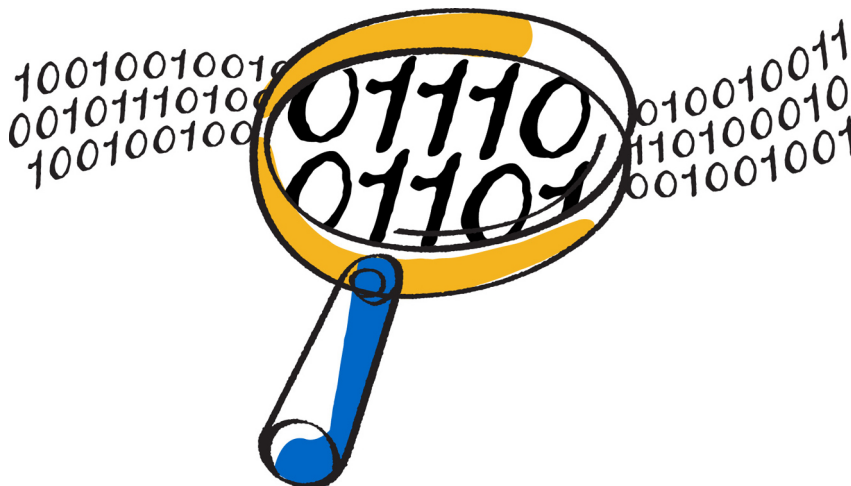




## Clustered Data ONTAP® 8.3

### Command Map for 7-Mode Administrators



NetApp, Inc.  
495 East Java Drive  
Sunnyvale, CA 94089  
U.S.

Telephone: +1 (408) 822-6000  
Fax: +1 (408) 822-4501  
Support telephone: +1 (888) 463-8277  
Web: [www.netapp.com](http://www.netapp.com)  
Feedback: [doccomments@netapp.com](mailto:doccomments@netapp.com)

Part number: 215-09138\_B0  
January 2015



# Contents

<b>How to interpret the clustered Data ONTAP commands, options, and configuration files maps for 7-Mode administrators .....</b>	<b>4</b>
<b>How 7-Mode commands map to clustered Data ONTAP commands .....</b>	<b>6</b>
<b>How 7-Mode options map to clustered Data ONTAP commands .....</b>	<b>38</b>
<b>How 7-Mode configuration files map to clustered Data ONTAP commands .....</b>	<b>62</b>
<b>Copyright information .....</b>	<b>64</b>
<b>Trademark information .....</b>	<b>65</b>
<b>How to send comments about documentation and receive update notification .....</b>	<b>66</b>

# How to interpret the clustered Data ONTAP commands, options, and configuration files maps for 7-Mode administrators

---

If you are moving from Data ONTAP running in 7-Mode to clustered Data ONTAP, you might find it handy to refer to the maps, which show the clustered Data ONTAP equivalents of 7-Mode commands, options, and configuration files.

## What mapping information is included

The Command Map for 7-Mode Administrators includes the following mappings of 7-Mode commands, options, and configuration files to their clustered Data ONTAP equivalents:

- [How 7-Mode commands map to clustered Data ONTAP commands](#) on page 6
- [How 7-Mode options map to clustered Data ONTAP commands](#) on page 38
- [How 7-Mode configuration files map to clustered Data ONTAP commands](#) on page 62

## How to interpret 7-Mode-compatible shortcut commands

Although the Data ONTAP command-line interface (CLI) is significantly reorganized for cluster operations, many of the commands have 7-Mode-compatible shortcut versions that require no change to scripts or other automated tasks. These shortcut versions are listed first and in **bold** in the tables here. Shortcut versions that are not 7-Mode-compatible are listed next, followed by the full, long-form version of the commands:

7-Mode command	Clustered Data ONTAP command
aggr add	<b>aggr add</b> aggr add-disks storage aggregate add-disks

If no **bold** shortcut is listed, a 7-Mode-compatible version is not available. Not all forms of any given command are shown in the table. The CLI is extremely flexible, allowing multiple abbreviated forms.

## Understanding the different clustered Data ONTAP shells for CLI commands

A cluster has three different shells for CLI commands:

- The *clustershell* is the native shell, started automatically when you log in to the cluster. It provides all the commands you need to configure and manage the cluster.

## How to interpret the clustered Data ONTAP commands, options, and configuration files maps for 7-Mode administrators | 5

- The *nodeshell* is a special shell that enables you to run a subset of 7-Mode commands. These commands take effect only at the node level. You can switch from the clustershell to a nodeshell session to run nodeshell commands interactively, or you can run a single nodeshell command from the clustershell. You can recognize a command as a nodeshell command if it has the (long) form `system node run -node {nodename|local} commandname`.
- The *systemshell* is a low-level shell used only for diagnostic and troubleshooting purposes. It is not intended for general administrative purposes. Access the systemshell only with guidance from technical support.

### Switching to nodeshell

When you see a 7-Mode-compatible shortcut version of a nodeshell command, it is assumed that you are running the command from the nodeshell. To switch to the nodeshell, enter the following:

```
system node run -node {nodename|local}
```

Other forms of the nodeshell command must be run from the clustershell.

### Where to go for more information

For more information, see these guides at the NetApp Support Site:

- For information about clustershell commands, see the *Clustered Data ONTAP Commands: Manual Page Reference*.
- For information about nodeshell commands, see the *Data ONTAP Commands: Manual Page Reference for 7-Mode, Volume 1*.
- For information about how to execute CLI commands, navigate CLI command directories, set values in the CLI, and use queries, patterns, and wildcards, see the *Clustered Data ONTAP System Administration Guide for Cluster Administrators*.

### Related references

[How 7-Mode commands map to clustered Data ONTAP commands](#) on page 6

[How 7-Mode options map to clustered Data ONTAP commands](#) on page 38

[How 7-Mode configuration files map to clustered Data ONTAP commands](#) on page 62

## How 7-Mode commands map to clustered Data ONTAP commands

You can use the tables provided to find the clustered Data ONTAP equivalents of 7-Mode commands, with the exception of the `options` command.

The next chapter lists the clustered Data ONTAP equivalents of the 7 Mode options command.

For information about how the tables in this chapter are organized, see [Understanding the 7-Mode to clustered Data ONTAP command map](#) on page 4.

### Navigation table

<i>A</i>	<i>B</i>	<i>C</i> on page 8	<i>D</i> on page 10	<i>E</i> on page 13	<i>F</i> on page 14
<i>G</i> (no entries)	<i>H</i> on page 15	<i>I</i> on page 16	<i>J</i> (no entries)	<i>K</i> on page 18	<i>L</i> on page 19
<i>M</i> on page 20	<i>N</i> on page 20	<i>O</i> on page 21	<i>P</i> on page 22	<i>Q</i> on page 23	<i>R</i> on page 24
<i>S</i> on page 25	<i>T</i> on page 32	<i>U</i> on page 33	<i>V</i> on page 34	<i>W</i> on page 37	<i>X</i> (no entries)
<i>Y</i> on page 37	<i>Z</i> (no entries)				

### A

7-Mode command	Clustered Data ONTAP command
acpadmin configure	system node run -node { <i>nodename</i>  local} acpadmin configure
acpadmin list_all	system node run -node { <i>nodename</i>  local} acpadmin list_all
acpadmin stats	system node run -node { <i>nodename</i>  local} acpadmin stats

<b>7-Mode command</b>	<b>Clustered Data ONTAP command</b>
aggr add	<b>aggr add</b> aggr add-disks storage aggregate add-disks
aggr create	<b>aggr create</b> storage aggregate create
aggr destroy	<b>aggr delete</b> storage aggregate delete
aggr media_scrub	system node run -node { <i>nodename</i>  local } aggr media_scrub
aggr offline	<b>aggr offline</b> storage aggregate offline
aggr online	<b>aggr online</b> storage aggregate online
aggr options	<b>aggr modify</b> storage aggregate {show   modify}
aggr rename	<b>aggr rename</b> storage aggregate rename
aggr restrict	<b>aggr restrict</b> storage aggregate restrict
aggr scrub	<b>aggr scrub</b> storage aggregate scrub
aggr show_space	<b>aggr show-space</b> storage aggregate show-space
aggr status	aggr show storage aggregate show
aggr verify	system node run -node { <i>nodename</i>  local } aggr verify
autosupport destinations	<b>autosupport destinations</b> system node autosupport destinations
autosupport history	<b>autosupport history</b> system node autosupport history

## 8 | Command Map for 7-Mode Administrators

7-Mode command	Clustered Data ONTAP command
autosupport manifest	<b>autosupport manifest</b> system node autosupport manifest
autosupport trigger	<b>autosupport trigger</b> system node autosupport trigger

### B

7-Mode command	Clustered Data ONTAP command
backup status	system node run -node <i>nodename</i> -command backup status
backup terminate	Not supported
bmc	Not supported
bmc reboot	Not supported
bmc status	Not supported
bmc test	Not supported

### C

7-Mode command	Clustered Data ONTAP command
cdpd show-neighbors	system node run -node { <i>nodename</i>  local } -command network device-discovery show
cdpd show-stats	system node run -node { <i>nodename</i>  local } -command cdpd show-stats
cdpd zero stats	system node run -node <i>nodename</i> -command cdpd zero-stats
cf disable	cf disable
cf enable	cf enable
cf forcegiveback	Not supported
cf forcetakeover	cf forcetakeover
cf giveback	<b>cf giveback</b> storage failover giveback
cf hw_assist	cf hwassist status storage failover hwassist show



<b>7-Mode command</b>	<b>Clustered Data ONTAP command</b>
cf monitor all	<b>cf monitor all</b> storage failover show -instance
cf partner	<b>cf partner</b> storage failover show -fields partner-name
cf rsrctbl	<b>cf rsrctbl</b> storage failover progress -table show
cf status	<b>cf status</b> storage failover show
cf takeover	<b>cf takeover</b> storage failover takeover
charmap	vserver cifs character-mapping
cifs access	<b>cifs access</b> vserver cifs access
cifs branchcache	<b>cifs branchcache</b> vserver cifs branchcache
cifs changefilerpwd	<b>cifs changefilerpwd</b> vserver cifs changefilerpwd
cifs domaininfo	vserver cifs { show instance domain discovered-servers show -instance }
cifs gpresult	vserver cifs group-policy show-applied
cifs gpupdate	vserver cifs group-policy update
cifs homedir	vserver cifs home-directory
cifs nalias	vserver cifs { add-netbios-aliases   remove-netbios-aliases   show -display-netbios-aliases }
cifs prefdc	vserver cifs domain preferred-dc
cifs restart	vserver cifs start
cifs sessions	vserver cifs sessions show
cifs setup	vserver cifs create
cifs shares	<b>cifs shares</b> vserver cifs share
cifs stat	statistics show -object cifs

## 10 | Command Map for 7-Mode Administrators

7-Mode command	Clustered Data ONTAP command
cifs terminate	vserver cifs stop
cifs testdc	vserver cifs domain discovered-servers
cifs resetdc	<b>cifs resetdc</b> vserver cifs domain discovered-servers reset-servers
clone clear	Not supported
clone start	volume file clone create
clone stop	Not supported
clone status	volume file clone show
config clone	Not supported
config diff	Not supported
config dump	Not supported
config restore	Not supported
coredump	system node coredump

### D

7-Mode command	Clustered Data ONTAP command
date	<b>date</b> { system   cluster } date { show   modify }
dcb priority	system node run -node <i>nodename</i> -command dcb priority
dcb priority show	system node run -node <i>nodename</i> -command dcb priority show
dcb show	system node run -node <i>nodename</i> -command dcb show
df	<b>df</b>
df [aggr name]	df -aggregate <i>aggregate-name</i>
df [path name]	df -filesystem-name <i>path- name</i>
df -A	<b>df -A</b>
df -g	<b>df -g</b> df -gigabyte

<b>7-Mode command</b>	<b>Clustered Data ONTAP command</b>
df -h	<b>df -h</b> df -autosize
df -i	<b>df -i</b>
df -k	<b>df -k</b> df -kilobyte
df -L	<b>df -L</b> df -flexcache
df -m	<b>df -m</b> df -megabyte
df -r	<b>df -r</b>
df -s	<b>df -s</b>
df -S	<b>df -S</b>
df -t	<b>df -t</b> df -terabyte
df -V	<b>df -V</b> df -volumes
df -x	<b>df -x</b> df -skip-snapshot-lines
disk assign	<b>disk assign</b> storage disk assign
disk encrypt	system node run -node <i>runnodename</i> -command disk encrypt
disk fail	<b>disk fail</b> storage disk fail
disk maint	<b>disk maint {start   abort   status   list }</b> system node run -node { <i>nodename</i>  local} -command disk maint {start   abort   status   list }
disk reassign	<b>disk reassign</b> storage disk reassign
disk remove	<b>disk remove</b> storage disk remove

## 12 | Command Map for 7-Mode Administrators

7-Mode command	Clustered Data ONTAP command
disk replace	<b>disk replace</b> storage disk replace
disk sanitize	system node run -node <i>nodename</i> -command disk sanitize
disk scrub	storage aggregate scrub
disk show	storage disk show
disk simpull	system node run -node <i>nodename</i> -command disk simpull
disk simpush	system node run -node <i>nodename</i> -command disk simpush
disk zero spares	storage disk zerospares
disk_fw_update	system node image modify
dns info	dns show
download	system node image update
du [path name]	du -vserver <i>vservername</i> -path <i>pathname</i> volume file show-disk-usage -vserver <i>vserver_name</i> -path <i>pathname</i>
du -h	du -vserver <i>vservername</i> -path <i>pathname</i> -h volume file show-disk-usage -vserver <i>vserver_name</i> -path <i>pathname</i> -h
du -k	du -vserver <i>vservername</i> -path <i>pathname</i> -k volume file show-disk-usage -vserver <i>vserver_name</i> -path <i>pathname</i> -k
du -m	du -vserver <i>vservername</i> -path <i>pathname</i> -m volume file show-disk-usage -vserver <i>vserver_name</i> -path <i>pathname</i> -m
du -r	du -vserver <i>vservername</i> -path <i>pathname</i> -r volume file show-disk-usage -vserver <i>vserver_name</i> -path <i>pathname</i> -r
du -u	du -vserver <i>vservername</i> -path <i>pathname</i> -u volume file show-disk-usage -vserver <i>vserver_name</i> -path <i>pathname</i> -u
dump	Not supported Initiate backup using NDMP. See the <i>Clustered Data ONTAP 8.3 Data Protection Tape Backup and Recovery Guide</i> for additional information. For dump-to-null functionality, set the NDMP environment variable DUMP_TO_NULL.

## E

7-Mode command	Clustered Data ONTAP command
echo	<b>echo</b>
ems event status	<b>ems event status</b> event status show
ems log dump	event log show -time > <i>time-interval</i>
ems log dump value	event log show
environment chassis	system node run -node { <i>nodename</i>  local } -command environment chassis
environment status	system node run -node <i>nodename</i> -command environment status
environment shelf	Not supported Use the "storage shelf" command set.
environment shelf_log	<b>environment shelf_log</b> system node run -node { <i>nodename</i>  local } -command environment shelf_log
environment shelf_stats	system node run -node { <i>nodename</i>  local } -command environment shelf_stats
environment shelf_power_statuses	Not supported Use the "storage shelf" command set.
environment chassis	system node run -node { <i>nodename</i>  local } -command environment chassis
environment chassis list-sensors	system node run -node { <i>nodename</i>  local } environment sensors show
exportfs	vserver export policy [rule]
exportfs -f	vserver export-policy cache flush
exportfs -o	vserver export-policy rule
exportfs -p	vserver export policy rule
exportfs -q	vserver export policy [rule]

## F

<b>7-Mode command</b>	<b>Clustered Data ONTAP command</b>
fcadmin config	system node run -node { <i>nodename</i>  local} -command fcadmin config
fcadmin link_stats	system node run -node { <i>nodename</i>  local} -command fcadmin link_stats
fcadmin fcal_stats	system node run -node { <i>nodename</i>  local} -command fcadmin fcal_stats
fcadmin device_map	system node run -node { <i>nodename</i>  local} -command fcadmin device_map
fcnic	Not supported
fcpc config	network fcpc adapter modify
fcpc nameserver	system node run -node { <i>nodename</i>  local} -command fcpc nameserver
fcpc nodename	<b>fcpc nodename</b> vserver fcpc nodename
fcpc ping	system node run -node { <i>nodename</i>  local} -command fcpc ping
fcpc portname	<b>fcpc portname</b> vserver fcpc portname
fcpc show	<b>fcpc show</b> vserver fcpc show
fcpc start	<b>fcpc start</b> vserver fcpc start
fcpc stats	<b>fcpc stats</b> fcpc adapter stats
fcpc status	<b>fcpc status</b> vserver fcpc status
fcpc stop	<b>fcpc stop</b> vserver fcpc stop
fcpc topology	system node run -node { <i>nodename</i>  local} -command fcpc topology
fcpc wwpn-alias	<b>fcpc wwpn-alias</b> vserver fcpc wwpn-alias
fcpc zone	system node run -node { <i>nodename</i>  local} -command fcpc zone
fcpc dump	system node run -node { <i>nodename</i>  local} -command fcpc dump

<b>7-Mode command</b>	<b>Clustered Data ONTAP command</b>
fcv reset	system node run -node { <i>nodename</i>  local} -command fcv reset
fcstat link_stats	system node run -node { <i>nodename</i>  local} -command fcstat link_stats
fcstat fcal_stats	system node run -node { <i>nodename</i>  local} -command fcstat fcal_stats
fcstat device_map	system node run -node { <i>nodename</i>  local} -command fcstat device_map
file reservation	volume file reservation
filestats	Not supported
flexcache	volume flexcache
fpolicy	<b>fpolicy</b> vserver fpolicy
fsecurity show	vserver security file-directory show
fsecurity apply	vserver security file-directory apply
fsecurity status	vserver security file-directory job-show
fsecurity cancel	vserver security file-directory job-stop
fsecurity remove-guard	vserver security file-directory remove-slag
ftp	Not supported

## H

<b>7-Mode command</b>	<b>Clustered Data ONTAP command</b>
halt	system node halt -node <i>nodename</i>
halt -f	system node halt inhibit -takeover true
halt -d	system node halt -dump true
help	?  <b>Note:</b> Type the question mark (?) symbol to execute this command in clustered Data ONTAP.
hostname	<b>hostname</b> system hostname

7-Mode command	Clustered Data ONTAP command
httpstat	Not supported Use the statistics command.

## I

7-Mode command	Clustered Data ONTAP command
if_addr_filter_info	system node run -note <i>nodename</i> -command if_addr_filter_info
ifconfig	network interface network {interface   port}
ifconfig -a	network interface show network {interface   port} show
ifconfig alias	network interface create
ifconfig down	network interface modify -status-admin down
ifconfig flowcontrol	network port modify -flowcontrol-admin
ifconfig mediatype	network port modify {-duplex-admin   -speed-admin}
ifconfig mtusize	network port modify -mtu
ifconfig netmask	network interface modify -netmask
ifconfig up	network interface modify -status-admin up
ifgrp create	network port ifgrp create
ifgrp add	network port ifgrp add -port
ifgrp delete	network port ifgrp remove-port
ifgrp destroy	network port ifgrp delete
ifgrp favor	system node run -node { <i>nodename</i>  local} -command ifgrp favor
ifgrp nofavor	system node run -node { <i>nodename</i>  local} -command ifgrp nofavor
ifgrp status	system node run -node { <i>nodename</i>  local} -command ifgrp status



<b>7-Mode command</b>	<b>Clustered Data ONTAP command</b>
ifgrp stat	system node run -node { <i>nodename</i>  local} -command ifgrp stat
ifgrp show	network port ifgrp show
ifinfo	system node run -node { <i>nodename</i>  local} -command ifinfo
ifstat	system node run -node { <i>nodename</i>  local} -command ifstat
igroup add	<b>igroup add</b> lun igroup add
igroup alua	lun igroup modify -alua
igroup bind	<b>igroup bind</b> lun igroup bind
igroup destroy	<b>igroup delete</b> lun igroup delete
igroup create	<b>igroup create</b> lun igroup create
igroup remove	<b>igroup remove</b> lun igroup remove
igroup rename	<b>igroup rename</b> lun igroup rename
igroup set	igroup lun igroup set
igroup show	<b>igroup show</b> lun igroup show
igroup set ostype	igroup modify -ostype
igroup unbind	<b>igroup unbind</b> lun igroup unbind
ipsec	Not supported
iscsi alias	iscsi create vserver iscsi create OR iscsi modify vserver iscsi modify

<b>7-Mode command</b>	<b>Clustered Data ONTAP command</b>
iscsi connection	<b>iscsi connection</b> vserver iscsi connection
iscsi initiator	<b>iscsi initiator</b> vserver iscsi initiator
iscsi interface	<b>iscsi interface</b> vserver iscsi interface
iscsi isns	<b>iscsi isns</b> vserver iscsi isns
iscsi portal	<b>iscsi portal</b> vserver iscsi portal
iscsi security	<b>iscsi security</b> vserver iscsi security
iscsi session	<b>iscsi session</b> vserver iscsi session
iscsi show	<b>iscsi show</b> vserver iscsi show
iscsi start	<b>iscsi start</b> vserver iscsi start
iscsi stats	statistics {start stop show} -object <i>object</i>  <b>Note:</b> Available at the advanced privilege level.
iscsi stop	<b>iscsi stop</b> vserver iscsi stop

**K**

<b>7-Mode command</b>	<b>Clustered Data ONTAP command</b>
key_manager	system node run -node { <i>nodename</i>  local} -command key_manager
keymgr	system node run -node { <i>nodename</i>  local} -command keymgr For management interface keys, use the "security certificates" commands.

## L

7-Mode command	Clustered Data ONTAP command
license	license show system license show
license add	<b>license add</b> system license add [ -license-code ] <i>V2_license_code</i>
license delete	<b>license delete</b> system license delete [ -package ] <i>package_name</i>
lock break	vserver locks break  <b>Note:</b> Available at the advanced privilege level.
lock status	vserver locks show
logger	<b>logger</b> system node run -node { <i>nodename</i>  local } -command logger
logout	exit
lun clone	volume file clone create
lun comment	<b>lun comment</b>
lun config_check	Not supported
lun create	lun create -vserver <i>vserver_name</i>
lun destroy	lun delete
lun map	lun map -vserver <i>vserver_name</i>
lun maxsize	<b>lun maxsize</b>
lun move	<b>lun move</b>
lun offline	lun modify -state offline
lun online	lun modify -state online
lun resize	<b>lun resize</b>
lun set	<b>lun set</b>
lun setup	lun create
lun share	Not supported

7-Mode command	Clustered Data ONTAP command
lun show	<b>lun show</b>
lun snap	Not supported
lun stats	statistics show -object lun* <b>Note:</b> Available at the advanced privilege level.
lun unmap	<b>lun unmap</b>

**M**

7-Mode command	Clustered Data ONTAP command
man	<b>man</b>
maxfiles	vol modify -max-number-of-files OR vol -fields files
mt	Not supported Use the storage tape command set.

**N**

7-Mode command	Clustered Data ONTAP command
nbtstat	vserver cifs nbtstat
ndmpd	{system   vserver} services ndmp
ndmpcopy	system node run -node {nodename local} ndmpcopy
ndmpd on	<b>ndmpd on</b> system services ndmpd on
ndmpd off	<b>ndmpd off</b> system services ndmpd off
ndmpd status	{ system   vserver } services ndmp status
ndmpd probe	{ system   vserver } services ndmp probe
ndmpd kill	{ system   vserver } services ndmp kill
ndmpd killall	{system   vserver} services ndmp kill-all

<b>7-Mode command</b>	<b>Clustered Data ONTAP command</b>
ndmpd password	{ system   vserver } services ndmp password
ndmpd version	{ system   vserver } services ndmp version
ndp	system node run -node { <i>nodename</i>  local } keymgr
netdiag	Not supported Use the network interface or netstat commands.
netsat	system node run node <i>nodename</i> command netstat
network interface failover	network interface show -failover
network port vlan modify	Not supported
nfs off	<b>nfs off</b> vserver nfs off
nfs on	<b>nfs on</b> vserver nfs on
nfs setup	vserver nfs create OR vserver setup
nfs stat	statistics { start   stop   show } -object nfs*
nfs status	vserver nfs status
nfs vstorage	vserver nfs modify -vstorage
nfsstat	statistics show -object nfs*

## O

<b>7-Mode command</b>	<b>Clustered Data ONTAP command</b>
orouted	Not supported

## P

7-Mode command	Clustered Data ONTAP command
partner	Not supported
passwd	security login password
perf report -t	statistics { start   stop   show } -object perf
ping {host}	network ping { -node <i>nodename</i>   -lif <i>lif-name</i> } -destination
ping {count}	network ping { -node <i>nodename</i>   -lif <i>lif-name</i> } -count
ping -l interface	network ping -lif <i>lif-name</i>
ping -v	network ping -node { <i>nodename</i>   -lif <i>lif-name</i> } -verbose
ping -s	network ping -node { <i>nodename</i>   -lif <i>lif-name</i> } -show-detail
ping -R	network ping -node { <i>nodename</i>   -lif <i>lif-name</i> } -record-route
pktt delete	system node run -node { <i>nodename</i>  local } pktt delete
pktt dump	system node run -node { <i>nodename</i>  local } pktt dump
pktt list	system node run -node { <i>nodename</i>  local } pktt list
pktt pause	system node run -node { <i>nodename</i>  local } pktt pause
pktt start	system node run -node { <i>nodename</i>  local } pktt start
pktt status	system node run -node { <i>nodename</i>  local } pktt status
pktt stop	system node run -node { <i>nodename</i>  local } pktt stop
portset add	<b>portset add</b> lun portset add
portset create	<b>portset create</b> lun portset create
portset delete	<b>portset delete</b> lun portset delete
portset remove	<b>portset remove</b> lun portset remove
portset show	<b>portset show</b> lun portset show
priority hybrid-cache default	Not supported

<b>7-Mode command</b>	<b>Clustered Data ONTAP command</b>
priority hybrid-cache set	volume modify -volume <i>volume_name</i> -vserver <i>vserver_name</i> -caching-policy <i>policy_name</i>
priority hybrid-cache show	volume show -volume <i>volume_name</i> -vserver <i>vserver_name</i> -fields caching -policy
priv set	set -privilege

**Q**

<b>7-Mode command</b>	<b>Clustered Data ONTAP command</b>
qtree create	<b>qtree create</b> volume qtree create
qtree oplocks	<b>qtree oplocks</b> volume qtree oplocks
qtree security	<b>qtree security</b> volume qtree security
qtree status	qtree show volume qtree show
qtree stats	qtree statistics volume qtree statistics
quota allow	quota modify -state volume quota modify -state on
quota disallow	quota modify -state volume quota modify -state off
quota off	<b>quota off</b> volume quota off
quota on	<b>quota on</b> volume quota on
quota report	<b>quota report</b> volume quota report
quota resize	<b>quota resize</b> volume quota resize

<b>7-Mode command</b>	<b>Clustered Data ONTAP command</b>
quota status	quota show volume quota show
quota logmsg	volume quota show -fields logging,logging -interval

**R**

<b>7-Mode command</b>	<b>Clustered Data ONTAP command</b>
radius	Not supported
rdate	Not supported
rdfile	Not supported
reallocate off	<b>reallocate off</b>
reallocate measure	<b>reallocate measure</b>
reallocate on	<b>reallocate on</b>
reallocate quiesce	<b>reallocate quiesce</b>
reallocate restart	<b>reallocate restart</b>
reallocate schedule	<b>reallocate schedule</b>
reallocate start	<b>reallocate start</b>
reallocate status	reallocate show
reallocate stop	<b>reallocate stop</b>
reboot	<b>reboot</b> system node reboot -node <i>nodename</i>
reboot -d	<b>reboot -d</b> system node reboot -dump true -node <i>nodename</i>
reboot -f	<b>reboot -f</b> reboot -inhibit-takeover true -node <i>nodename</i>



7-Mode command	Clustered Data ONTAP command
restore	Not supported Initiate restore using NDMP. Refer to the "Clustered Data ONTAP 8.3 Protection Tape Backup and Recovery Guide" for additional information.
restore_backup	system node restore-backup <b>Note:</b> Available at the advanced privilege level.
revert_to	system node revert-to node <i>nodename</i> -version
rlm	Not supported
route add	<b>route add</b> network route create
route delete	<b>route delete</b> network route delete
route -s	network routing-groups route show

## S

7-Mode command	Clustered Data ONTAP command
sasadmin adapter_state	system node run -node { <i>nodename</i>  local} -command sasadmin adapter_state
sasadmin channels	system node run -node { <i>nodename</i>  local} -command sasadmin channels
sasadmin dev_stats	system node run -node { <i>nodename</i>  local} -command sasadmin dev_stats
sasadmin expander	system node run -node { <i>nodename</i>  local} -command sasadmin expander
sasadmin expander_map	system node run -node { <i>nodename</i>  local} -command sasadmin expander_map
sasadmin expander_phy_state	system node run -node { <i>nodename</i>  local} -command sasadmin expander_phy_state
sasadmin shelf	storage shelf
sasadmin shelf_short	storage shelf
sasstat dev_stats	system node run -node { <i>nodename</i>  local} -command sasstat dev_stats
sasstat adapter_state	system node run -node { <i>nodename</i>  local} -command sasstat adapter_state
sasstat expander	system shelf show -port
sasstat expander_map	storage shelf show -module

7-Mode command	Clustered Data ONTAP command
sasstat expander_phy_state	system node run -node { <i>nodename</i>  local} sasstat expander_phy_state
sasstat shelf	storage shelf
savecore	system node coredump save-all
savecore -i	system node coredump config show -i
savecore -l	system node coredump show
savecore -s	system node coredump status
savecore -w	Not supported
savecore -k	system node coredump delete-all -type unsaved-kernel
sectrace add	vserver security trace create
sectrace delete	vserver security trace delete
sectrace show	vserver security trace filter show
sectrace print-status	vserver security trace trace-result show
secureadmin addcert	security certificate install
secureadmin disable ssh	security login modify
secureadmin disable ssl	security ssl modify
secureadmin enable ssl	security ssl modify
secureadmin setup	security
secureadmin setup ssh	security ssh {add   modify}
secureadmin setup ssl	security ssl {add   modify}
secureadmin enable ssh	security login modify
secureadmin status ssh	security login show
secureadmin status ssl	security ssl show
setup	Not supported
shelfchk	Not supported
showfh	<b>showfh</b> volume file show-filehandle

<b>7-Mode command</b>	<b>Clustered Data ONTAP command</b>
sis config	<b>sis config</b> volume efficiency config
sis off	<b>sis off</b> volume efficiency off
sis on	<b>sis on</b> volume efficiency on
sis revert_to	<b>sis revert_to</b> volume efficiency revert-to  <b>Note:</b> Available at the advanced privilege level.
sis start	<b>sis start</b> volume efficiency start
sis stop	<b>sis stop</b> volume efficiency stop
smtape	{system   server} smtape
snap autodelete	<b>snap autodelete</b> volume snapshot autodelete
snap create	<b>snap create</b> volume snapshot create
snap delete	<b>snap delete</b> volume snapshot delete
snap delta	Not supported
snap list	snap show volume snapshot show
snap reclaimable	volume snapshot compute -reclaimable  <b>Note:</b> Available at the advanced privilege level.
snap rename	<b>snap rename</b> volume snapshot rename
snap reserve	volume { modify   show } –fields percent-snapshot-space –volume <i>volume-name</i>  storage aggregate { modify   show } –fields percent-snapshot-space –aggregate <i>aggregate-name</i>

7-Mode command	Clustered Data ONTAP command
snap restore	<b>snap restore</b> volume snapshot restore <b>Note:</b> Available at the advanced privilege level.
snap sched	volume snapshot policy
snap reclaimable	volume snapshot compute-reclaimable <b>Note:</b> Available at the advanced privilege level.
snapmirror abort	<b>snapmirror abort</b>
snapmirror break	<b>snapmirror break</b>
snapmirror destinations	snapmirror list-destinations
snapmirror initialize	<b>snapmirror initialize</b>
snapmirror migrate	Not supported
snapmirror off	Not supported
snapmirror on	Not supported
snapmirror quiesce	<b>snapmirror quiesce</b>
snapmirror release	<b>snapmirror release</b>
snapmirror resume	<b>snapmirror resume</b>
snapmirror resync	<b>snapmirror resync</b>
snapmirror status	snapmirror show
snapmirror throttle	Not supported
snapmirror update	<b>snapmirror update</b>
snmp authtrap	<b>snmp authtrap</b>
snmp community	<b>snmp community</b>
snmp contact	<b>snmp contact</b>
snmp init	<b>snmp init</b>
snmp location	<b>snmp location</b>
snmp traphost	<b>snmp traphost</b>
snmp traps	event route show -snmp-support true

<b>7-Mode command</b>	<b>Clustered Data ONTAP command</b>
software delete	system node image package delete
software get	system node image get
software install	system node image update
software list	system node image package show
software update	system node image update
source	Not supported
sp reboot	system service-processor reboot-sp
sp setup	system service-processor network modify
sp status	system service-processor show
sp status -d	system node autosupport invoke-splog
sp status -v	system node autosupport invoke-splog
sp update	system service-processor image update
sp update-status	system service-processor image update-progress
statit	statistics { start   stop   show } -preset statit
stats	statistics { start   stop   show } -object <i>object</i> <b>Note:</b> Available at the advanced privilege level.
storage aggregate copy	Not supported
storage aggregate media_scrub	system node run -node <i>nodename</i> -command aggr media_scrub
storage aggregate snapshot	Not supported
storage aggregate split	Not supported
storage aggregate undestroy	Not supported
storage alias	storage tape alias set
storage array	<b>storage array</b>
storage array modify	<b>storage array modify</b>
storage array remove	<b>storage array remove</b>

7-Mode command	Clustered Data ONTAP command
storage array remove-port	storage array port remove
storage array show	<b>storage array show</b>
storage array show-config	storage array config show
storage array show luns	Not supported
storage array show-ports	storage array port show
storage disable adapter	system node run -node { <i>nodename</i>  local } -command storage disable adapter
storage download acp	system node run -node { <i>nodename</i>  local } -command storage download acp
storage download shelf	storage firmware download  <b>Note:</b> Available at the advanced privilege level.
storage enable adapter	system node run -node { <i>nodename</i>  local } -command storage enable adapter
storage load balance	<b>storage load balance</b>
storage load show	<b>storage load show</b>
storage show acp	system node run -node { <i>nodename</i>  local } -command storage show acp
storage show adapter	system node run -node { <i>nodename</i>  local } -command storage show adapter
storage show bridge	storage bridge show
storage show disk	<b>storage show disk</b> storage disk show
storage show expander	storage shelf
storage show fabric	system node run -node { <i>nodename</i>  local } -command storage show fabric
storage show fault	system node run -node <i>nodename</i> -command storage show fault
storage show hub	system node run -node { <i>nodename</i>  local } -command storage show hub
storage show initiators	system node run -node { <i>nodename</i>  local } -command storage show initiators

<b>7-Mode command</b>	<b>Clustered Data ONTAP command</b>
storage show mc	storage tape show-media-changer
storage show port	storage switch
storage show shelf	storage shelf
storage show switch	storage switch show
storage show tape	storage tape show-tape-drive
storage stats tape	statistics show -object tape
storage stats tape zero	statistics { start   stop   show } -object tape
storage unalias	storage tape alias clear
sysconfig	Not supported
sysconfig -a	system node run -node { <i>nodename</i>  local } -command sysconfig -a
sysconfig -A	system node run -node { <i>nodename</i>  local } -command sysconfig -A
sysconfig -c	system controllers config-errors show
sysconfig -d	system node run -node { <i>nodename</i>  local } -command sysconfig -d
sysconfig -D	system controller config pci show-add-on devices
sysconfig -h	system node run -node { <i>nodename</i>  local } -command sysconfig -h
sysconfig -m	storage tape show-media-changer
sysconfig -M	system node run -node { <i>nodename</i>  local } -command sysconfig -M
sysconfig -p	<p>Not supported</p> <p>Use the following commands as alternatives:</p> <ul style="list-style-type: none"> <li>• Hypervisor information: system node virtual-machine hypervisor show</li> <li>• System disks backing stores: system node virtual-machine instance show-system-disks</li> <li>• Virtual disks backing information: storage disk show -virtual-machine-disk-info</li> </ul>
sysconfig -P	system controller config pci show-hierarchy

7-Mode command	Clustered Data ONTAP command
sysconfig -r	Not supported To view disk information, use the following commands: <ul style="list-style-type: none"> <li>• File system disks: storage aggregate showstatus</li> <li>• Spare disks: storage aggregate show-sparedisks</li> <li>• Broken disks: storage disk show -broken</li> <li>• Disks in the maintenance center: storage disk show -maintenance</li> </ul>
sysconfig -t	storage tape show
sysconfig -v	system node run -node <i>nodename</i> -command sysconfig -v
sysconfig -V	system node run -node { <i>nodename</i>  local } -command sysconfig -V
sysstat	statistics { start   stop   show } -preset sysstat <b>Note:</b> Available at the advanced privilege level.
system health alert	<b>system health alert</b>
system health autosupport	<b>system health autosupport</b>
system health config	<b>system health config</b>
system health node-connectivity	<b>system health node-connectivity</b>
system health policy	<b>system health policy</b>
system health status	<b>system health status</b>
system health subsystem show	<b>system health subsystem show</b>

## T

7-Mode command	Clustered Data ONTAP command
timezone	<b>timezone</b>
traceroute -m	<b>traceroute -m</b> network traceroute { -node <i>nodename</i>   -lif <i>lif-name</i> } -maxttl <i>integer</i>
traceroute -n	<b>traceroute -n</b> network traceroute -node { <i>nodename</i>   -lif <i>lif-name</i> } -numeric true



<b>7-Mode command</b>	<b>Clustered Data ONTAP command</b>
traceroute -p	<b>traceroute -p</b> network traceroute { -node <i>nodename</i>   -lif <i>lif-name</i> } -port <i>integer</i>
traceroute -q	<b>traceroute -q</b> network traceroute { -node <i>nodename</i>   -lif <i>lif-name</i> } -nqueries <i>integer</i>
traceroute -s	Not supported
traceroute -v	<b>traceroute -v</b> network traceroute { -node <i>nodename</i>   -lif <i>lif-name</i> } -verbose [ true ]
traceroute -w	<b>traceroute -w</b> network traceroute { -node <i>nodename</i>   -lif <i>lif-name</i> } -waittime <i>integer</i>

## U

<b>7-Mode command</b>	<b>Clustered Data ONTAP command</b>
ucadmin	system node hardware unified-connect
ups	Not supported
uptime	system node show -fields uptime
useradmin domainuser add	security login create
useradmin domainuser delete	security login delete
useradmin domainuser list	security login show
useradmin domainuser load	Not supported Use "vserver cifs users-and-groups" command set.
useradmin group add	security login role create
useradmin group delete	security login role delete
useradmin group list	security login role show
useradmin group modify	security login role modify
useradmin role add	security login role create

<b>7-Mode command</b>	<b>Clustered Data ONTAP command</b>
useradmin role delete	security login role delete
useradmin role list	security login role show
useradmin role modify	security login role modify
useradmin user add	security login create
useradmin user delete	security login delete
useradmin user list	security login show
useradmin user modify	security login modify

**V**

<b>7-Mode command</b>	<b>Clustered Data ONTAP command</b>
version -b	<b>version -b</b> OR system image show
version -v	<b>version -v</b> OR system image show
vfiler	Not supported
vfiler run	vserver
vfiler start	vserver start
vfiler stop	vserver stop
vfiler status	vserver show
vfiler disallow	vserver modify -disallowed-protocols
vlan add	network port vlan create
vlan create	network port vlan create
vlan delete	network port vlan delete
vlan modify	Not supported
vlan stat	system node run -node <i>nodename</i> -command vlan stat

<b>7-Mode command</b>	<b>Clustered Data ONTAP command</b>
vmervices	system node run -node { <i>nodename</i>  local } vmervices
volume add	Not supported
volume autosize	<b>volume autosize</b>
volume clone	<b>volume clone</b>
volume clone split	<b>volume clone split</b>
volume container	volume show -fields aggregate
volume copy	<b>volume copy</b> volume quota policy copy
volume create	<b>volume create</b>
vol destroy	volume destroy
volume file fingerprint	Not supported
volume media_scrub	Not supported
volume migrate	Not supported
vol mirror	Not supported
volume move	<b>volume move</b>
volume offline	<b>volume offline</b>
volume online	<b>volume online</b>
volume options	volume {show   modify }
volume quota allow	Not supported
volume quota disallow	Not supported
volume rename	<b>volume rename</b>
volume restrict	<b>volume restrict</b>
volume scrub	Not supported
volume size	<b>volume size</b>

7-Mode command	Clustered Data ONTAP command
volume snapshot delta	Not supported
volume snapshot reserve	Not supported Alternative commands include the following: <ul style="list-style-type: none"> <li>• For volumes, use: the "volume show -fields percent-snapshot-space" and "volume modify -volume <i>volumename</i> -percent-snapshot-space <i>percent</i>" commands.</li> <li>• For aggregates, use the "storage aggregate show -fields percent-snapshot-space" and "storage aggregate modify -aggregate <i>aggregate name</i> -percent-snapshot-space <i>percent</i>" commands.</li> </ul>
volume split	Not supported
volume status	volume show
volume verify	Not supported
volume wafiron	Not supported
vscan	vserver vscan
vserver cifs adupdate	Not supported
vserver cifs broadcast	Not supported
vserver cifs comment	Not supported
vserver cifs top	Not supported
vserver iscsi ip_tpgroup add	Not supported
vserver iscsi ip_tpgroup create	Not supported
vserver iscsi ip_tpgroup destroy	Not supported
vserver iscsi ip_tpgroup remove	Not supported

7-Mode command	Clustered Data ONTAP command
vserver iscsi ip_tpgroup show	Not supported
vserver iscsi tpgroup alua set	Not supported
vserver iscsi tpgroup alua show	Not supported
vserver services name-service dns flush	Not supported

**W**

7-Mode command	Clustered Data ONTAP command
wrfile	Not supported

**Y**

7-Mode command	Clustered Data ONTAP command
ypcat	Not supported
ypgroup	Not supported
ypmatch	Not supported
ypwhich	Not supported

**Related concepts**

*[How to interpret the clustered Data ONTAP commands, options, and configuration files maps for 7-Mode administrators](#) on page 4*

**Related references**

*[How 7-Mode options map to clustered Data ONTAP commands](#) on page 38*

*[How 7-Mode configuration files map to clustered Data ONTAP commands](#) on page 62*

## How 7-Mode options map to clustered Data ONTAP commands

---

In Data ONTAP operating in 7-Mode, you execute the `options` command to set configurable storage system software options. In clustered Data ONTAP, you use command parameters to set these options. You can use the provided tables to view how 7-Mode commands map to clustered Data ONTAP commands.

In the “7-Mode command” column, the base `options` command is not shown, for the sake of clarity. Where you see `acp.domain`, the actual long form of the command is `options acp.domain`.

For information about how the tables in this chapter are organized, see [Understanding the 7-Mode to clustered Data ONTAP command mapping](#) on page 4.

### Navigation table

<i>A</i> on page 38	<i>B</i> on page 40	<i>C</i> on page 41	<i>D</i> on page 44	<i>E</i> on page 45	<i>F</i> on page 45
<i>G</i> (no entries)	<i>H</i> on page 47	<i>I</i> on page 47	<i>J</i> (no entries)	<i>K</i> on page 49	<i>L</i> on page 49
<i>M</i> (no entries)	<i>N</i> on page 52	<i>O</i> (no entries)	<i>P</i> on page 55	<i>Q</i> on page 55	<i>R</i> on page 55
<i>S</i> on page 57	<i>T</i> on page 60	<i>U</i> (no entries)	<i>V</i> (no entries)	<i>W</i> on page 61	<i>X</i> (no entries)
<i>Y</i> (no entries)	<i>Z</i> (no entries)				

7-Mode option	Clustered Data ONTAP command
acp.domain	system node run -node { <i>nodename</i>  local} options acp.domain
acp.enabled	system node run -node { <i>nodename</i>  local} options acp.enabled
acp.netmask	system node run -node { <i>nodename</i>  local} options acp.netmask
acp.port	system node run -node { <i>nodename</i>  local} options acp.port
auditlog.enable	security audit
auditlog.max_file_size	Not supported
auditlog.readonly_api.enable	security audit
autologout.console.enable	system timeout modify -timeout
autologout.console.timeout	system timeout modify -timeout
autologout.telnet.enable	Not supported
autologout.telnet.timeout	Not supported
autosupport.cifs.verbose	Not supported
autosupport.content	system node autosupport modify -node <i>nodename</i> -remove -private -data {true   false}
autosupport.doit	system node autosupport invoke -node <i>nodename</i> -type { all   test }
autosupport.enable	system node autosupport modify -node <i>nodename</i> -state { enable   disable }
autosupport.from	system node autosupport modify -node <i>nodename</i> -from
autosupport.local_collection	system node autosupport modify -node <i>nodename</i> -local-collection { true   false }
autosupport.mailhost	system node autosupport modify -node <i>nodename</i> -mail-hosts
autosupport.max_http_size	system node autosupport modify -node <i>nodename</i> -max-http-size
autosupport.max_smtp_size	system node autosupport modify -node <i>nodename</i> -max-smtp-size

<b>7-Mode option</b>	<b>Clustered Data ONTAP command</b>
autosupport.minimal.subject.id	system node autosupport modify -node <i>nodename</i> -hostname-subj
autosupport.nht_data.enable (not in smf)	autosupport modify -nht system node autosupport modify -nht
autosupport.noteto	system node autosupport modify -node <i>nodename</i> -noteto
autosupport.partner.to	system node autosupport modify -node <i>nodename</i> -partner-address
autosupport.performance_data.doit	system node autosupport invoke -node <i>nodename</i> -type performance
autosupport.performance_data.enable	system node autosupport modify -node <i>nodename</i> -perf { true   false }
autosupport.periodic.tx_window	system node autosupport modify -node <i>nodename</i> -periodic-tx-window
autosupport.retry.count	system node autosupport modify -node <i>nodename</i> -retry-count
autosupport.retry.interval	system node autosupport modify -node <i>nodename</i> -retry-interval
autosupport.support.enable	system node autosupport modify -node <i>nodename</i> -support { enable   disable }
autosupport.support.proxy	system node autosupport modify -node <i>nodename</i> -proxy-url
autosupport.support.reminder	system node autosupport show -node <i>nodename</i> -fields reminder
autosupport.support.transport	system node autosupport modify -node <i>nodename</i> -transport { http   https   smtp }
autosupport.to	system node autosupport modify -node <i>nodename</i> -to
autosupport.validate_digital_certificate	system node autosupport modify -node <i>nodename</i> -validate-digital-certificate { true   false }

**B**

<b>7-Mode option</b>	<b>Clustered Data ONTAP command</b>
backup.log.enable	Not supported



## C

7-Mode option	Clustered Data ONTAP command
cdpd.enable	system node run -node { <i>nodename</i>  local} options cdpd.enable
cdpd.holdtime	system node run -node { <i>nodename</i>  local} options cdpd.holdtime
cdpd.interval	system node run -node { <i>nodename</i>  local} options cdpd.interval
cf.giveback.auto.after.panic.takeover	storage failover modify -auto-giveback-after-panic
cf.giveback.auto.cancel.on_network_failure	Not supported
cf.giveback.auto.delay.seconds	storage failover modify -delay-seconds
cf.giveback.auto.enable	storage failover modify -auto-giveback
cf.giveback.auto.override.vetoes	storage failover modify -auto-giveback-override-vetoes
cf.giveback.auto.terminate.bigjobs	storage failover modify -abort-operations
cf.giveback.check.partner	storage failover modify -check-partner
cf.hw_assist.enable	storage failover modify -hwassist
cf.hw_assist.partner.address	storage failover modify -hwassist-partner-ip
cf.hw_assist.partner.port	storage failover modify -hwassist-partner-port
cf.mode	storage failover modify -mode
cf.remote_syncmirror.enable	Not supported
cf.sfoaggr_maxtime	storage failover modify -aggregate-migration-timeout <b>Note:</b> Available at the advanced privilege level.
cf.takeover.bypass_optimization	storage failover modify -bypass-takeover-optimization
cf.takeover.change_fsid	Not supported
cf.takeover.detection.seconds	storage failover modify -detection-time
cf.takeover.on_disk_shelf_miscompare	Not supported
cf.takeover.on_failure	storage failover modify -onfailure <b>Note:</b> Available at the advanced privilege level.

7-Mode option	Clustered Data ONTAP command
cf.takeover.on_network_interface_failure	Not supported
cf.takeover.on_network_interface_failure. policy all_nics	Not supported
cf.takeover.on_panic	storage failover modify -onpanic
cf.takeover.on_reboot	storage failover modify -onreboot
cf.takeover.on_short_uptime	storage failover modify -onshort-uptime <b>Note:</b> Available at the advanced privilege level.
cifs.LMCompatibilityLevel	vserver cifs security modify -lm-compatibility-level
cifs.audit.autosave.file.extension	Not supported
cifs.audit.autosave.file.limit	vserver audit modify -rotate-limit
cifs.audit.autosave.onsize.enable	Not supported
cifs.audit.autosave.onsize.threshold	Not supported
cifs.audit.autosave.ontime.enable	Not supported
cifs.audit.autosave.ontime.interval	Not supported
cifs.audit.enable	vserver audit
cifs.audit.file_access_events.enable	vserver audit modify -events
cifs.audit.nfs.filter.filename	Not supported
cifs.audit.logon_events.enable	vserver audit modify -events cifs-logon-logoff
cifs.audit.logsize	Not supported
cifs.audit.nfs.enable	vserver audit modify -events file-ops
cifs.audit.nfs.filter.filename	Not supported
cifs.audit.saveas	vserver audit modify -destination
cifs.bypass_traverse_checking	vserver cifs users-and-groups privilege
cifs.comment	vserver cifs create -comment
cifs.enable_share_browsing	vserver cifs share
cifs.gpo.enable	vserver cifs group-policy
cifs.gpo.trace.enable	Not supported
cifs.grant_implicit_exe_perms	vserver cifs options modify -read-grant-exec

7-Mode option	Clustered Data ONTAP command
cifs.guest_account	Not supported
cifs.home_dir_namestyle	vserver cifs share create
cifs.home_dirs_public	vserver cifs home-directory modify -is-home-dirs-access-for-public-enabled{ true   false }  <b>Note:</b> Available at the advanced privilege level.
cifs.home_dirs_public_for_admin	vserver cifs home-directory modify -is-home-dirs-access-for-public-enabled{ true   false }  <b>Note:</b> Available at the advanced privilege level.
cifs.idle_timeout	vserver cifs options modify -client-session-timeout
cifs.ipv6.enable	Not supported
cifs.max_mpx	vserver cifs options modify -max-mpx
cifs.ms_snapshot_mode	Not supported
cifs.netbios_over_tcp.enable	Not supported
cifs.nfs_root_ignore_acl	Not supported
cifs.ntfs_ignore_unix_security_ops	vserver nfs modify -ntfs-unix-security-ops  <b>Note:</b> Available at the advanced privilege level.
cifs.oplocks.enable	vserver cifs share modify -share-properties
cifs.oplocks.opendelta *	Not supported
cifs.perm_check_ro_del_ok	vserver cifs options modify -is-read-only-delete-enabled
cifs.perm_check_use_gid	Not supported
cifs.restrict_anonymous	vserver cifs options modify -restrict-anonymoust
cifs.save_case	-restrict-anonymous
cifs.scopeid	Not supported
cifs.search_domains	vserver cifs domain name-mapping-search
cifs.show_dotfiles	Not supported
cifs.show_snapshot	vserver cifs share modify -share-properties
cifs.shutdown_msg_level	Not supported
cifs.signing.enable	vserver cifs security modify -is-signing-required

<b>7-Mode option</b>	<b>Clustered Data ONTAP command</b>
cifs.smb2.client.enable	Not supported
cifs.smb2.durable_handle.enable	Not supported
cifs.smb2.durable_handle.timeout	Not supported
cifs.smb2.enable	vserver cifs options modify -smb2-enabled
cifs.smb2.signing.required	vserver cifs options modify -is-signing-required
cifs.smb2_1.branch_cache.enable	vserver cifs share properties
cifs.smb2_1.branch_cache.hash_time_out	Not supported
cifs.snapshot_file_folding.enable	Not supported
cifs.symlinks.cycleguard	Not supported
cifs.symlinks.enable	vserver cifs share modify -symlink-properties
cifs.universal_nested_groups.enable	Not supported
cifs.W2K_password_change	vserver cifs domain password change
cifs.W2K_password_change_interval	vserver cifs domain password change schedule
cifs.W2K_password_change_within	vserver cifs domain password change schedule
cifs.widelink.ttl	Not supported
console.encoding	Not supported
coredump.dump.attempts	system node coredump config modify -coredump-attempts
coredump.metadata_only	system node coredump config modify -sparsecore-enabled true

**D**

<b>7-Mode option</b>	<b>Clustered Data ONTAP command</b>
disk.asup_on_mp_loss	system node autosupport trigger modify dsk.redun.fault
disk.auto_assign	storage disk option modify -autoassign
disk.auto_assign_shelf	storage disk option modify -autoassign-shelf
disk.maint_center.allowed_entries	Not supported
disk.maint_center.enable	system node run -node { <i>nodename</i>  local } options disk.maint_center.enable

7-Mode option	Clustered Data ONTAP command
disk.maint_center.max_disks	system node run -node { <i>nodename</i>  local} options disk.maint_center.max_disks
disk.maint_center.rec_allowed_entries	system node run -node { <i>nodename</i>  local} options disk.maint_center.rec_allowed_entries
disk.maint_center.spares_check	system node run -node { <i>nodename</i>  local} options disk.maint_center.spares_check
disk.powercycle.enable	system node run -node { <i>nodename</i>  local} options disk.powercycle.enable
disk.recovery_needed.count	Not supported
disk.target_port.cmd_queue_depth	storage array modify -name <i>array_name</i> -max-queue-depth
dns.cache.enable	Not supported
dns.domainname	vserver services name-service dns modify -domains
dns.enable	vserver services name-service dns modify -state
dns.update.enable	Not supported
dns.update.ttl	Not supported

## E

7-Mode option	Clustered Data ONTAP command
ems.autosuppress.enable	event config modify -suppression {on off} <b>Note:</b> Available at the advanced privilege level.

## F

7-Mode option	Clustered Data ONTAP command
fcp.enable	fcp start
flexcache.access	Not supported
flexcache.deleg.high_water	Not supported
flexcache.deleg.low_water	Not supported
flexcache.enable	Not supported
flexcache.per_client_stats	Not supported

7-Mode option	Clustered Data ONTAP command
flexscale.enable	system node run -node { <i>nodename</i>  local} options flexscale.enable
flexscale.lopri_blocks	system node run -node { <i>nodename</i>  local} options flexscale.lopri_blocks
flexscale.normal_data_blocks	system node run -node { <i>nodename</i>  local} options flexscale.normal_data_blocks
flexscale.pcs_high_res	system node run -node { <i>nodename</i>  local} options flexscale.pcs_high_res
flexscale.pcs_size	system node run -node { <i>nodename</i>  local} options flexscale.pcs_size
flexscale.rewarm	system node run -node { <i>nodename</i>  local} options flexscale.rewarm
fpolicy.enable	vserver fpolicy enable
fpolicy.i2p_ems_interval	Not supported
fpolicy.multiple_pipes	Not supported
ftpd.3way.enable	Not supported
ftpd.anonymous.enable	Not supported
ftpd.anonymous.home_dir	Not supported
ftpd.anonymous.name	Not supported
ftpd.auth_style	Not supported
ftpd.bypass_traverse_checking	Not supported
ftpd.dir.override	Not supported
ftpd.dir.restriction	Not supported
ftpd.enable	Not supported
ftpd.explicit.allow_secure_data_conn	Not supported
ftpd.explicit.enable	Not supported
ftpd.idle_timeout	Not supported
ftpd.implicit.enable	Not supported
ftpd.ipv6.enable	Not supported
ftpd.locking	Not supported

<b>7-Mode option</b>	<b>Clustered Data ONTAP command</b>
ftpd.log.enable	Not supported
ftpd.log.filesize	Not supported
ftpd.log.nfiles	Not supported
ftpd.max_connections	Not supported
ftpd.max_connections_threshold	Not supported
ftpd.tcp_window_size	Not supported

**H**

<b>7-Mode option</b>	<b>Clustered Data ONTAP command</b>
httpd.access	Not supported
httpd.admin.access	Not supported
httpd.admin.enable	vserver services web modify -enabled {true false}
httpd.admin.hostsequiv.enable	Not supported
httpd.admin.max_connections	Not supported
httpd.admin.ssl.enable	security ssl
httpd.admin.top-page.authentication	Not supported
httpd.bypass_traverse_checking	Not supported
httpd.enable	Not supported
httpd.ipv6.enable	Not supported
httpd.log.format	Not supported
httpd.method.trace.enable	Not supported
httpd.rootdir	Not supported
httpd.timeout	Not supported
httpd.timewait.enable	Not supported

**I**

<b>7-Mode option</b>	<b>Clustered Data ONTAP command</b>
ifgrp.failover.link_degraded	Not supported
interface.blocked.cifs	network interface create -data-protocol

<b>7-Mode option</b>	<b>Clustered Data ONTAP command</b>
interface.blocked.iscsi	network interface create -data-protocol
interface.blocked.mgmt_data_traffic	network interface create -role
interface.blocked.ndmp	system services firewall policy modify -policy <i>policy name</i> -service ndmp
interface.blocked.nfs	network interface create -data-protocol
interface.blocked.snapmirror	network interface create -role
ip.fastpath.enable	system node run -node { <i>nodename</i>  local} options ip.fastpath.enable
ip.ipsec.enable	Not supported
ip.match_any_ifaddr	Not supported
ip.path_mtu_discovery.enable	system node run -node { <i>nodename</i>  local} options ip.path_mtu_discovery.enable
ip.ping_throttle.alarm_interval	system node run -node { <i>nodename</i>  local} options ip.ping_throttle.alarm_interval
ip.ping_throttle.drop_level	system node run -node { <i>nodename</i>  local} options ip.ping_throttle.drop.level
ip.tcp.abc.enable	system node run -node { <i>nodename</i>  local} options ip.tcp.abc.enable
ip.tcp.abc.l_limit	system node run -node { <i>nodename</i>  local} options ip.tcp.abc.l_limit
ip.tcp.batching.enable	system node run -node { <i>nodename</i>  local} options ip.tcp.batching.enable
ip.tcp.newreno.enable	Not supported
ip.tcp.rfc3390.enable	system node run -node { <i>nodename</i>  local} options ip.tcp.rfc3390.enable
ip.tcp.sack.enable	system node run -node { <i>nodename</i>  local} options ip.tcp.sack.enable
ip.v6.enable	network options ipv6 modify
ip.v6.ra_enable	Not supported
iscsi.auth.radius.enable	Not supported
iscsi.enable	iscsi start
iscsi.max_connections_per_session	iscsi modify -max -conn-per-session



7-Mode option	Clustered Data ONTAP command
iscsi.max_error_recovery_level	iscsi modify -max-error-recovery-level

## K

7-Mode option	Clustered Data ONTAP command
kerberos.file_keytab.principal	Not supported
kerberos.file_keytab.realmipal	Not supported

## L

7-Mode option	Clustered Data ONTAP command
ldap.ADdomain	vserver services name-service ldap client modify -ad-domain
ldap.base	vserver services name-service ldap client modify -base-dn
ldap.base.group	ldap client modify -group-dn <i>ldap DN</i> -group-scope <b>Note:</b> Available at the advanced privilege level.
ldap.base.netgroup	ldap client modify -netgroup-dn <i>ldap DN</i> -netgroup-scope <b>Note:</b> Available at the advanced privilege level.
ldap.base.passwd	vserver services ldap client modify -user-dn <b>Note:</b> Available at the advanced privilege level.
ldap.enable	vserver services name-service ldap modify
ldap.minimum_bind_level	vserver services name-service ldap client modify -min-bind-level
ldap.name	vserver services name-service ldap client modify -bind-dn
ldap.nssmap.attribute.gecos	ldap client schema modify -gecos-attribute <b>Note:</b> Available at the advanced privilege level.
ldap.nssmap.attribute.gidNumber	ldap client schema modify -gid-number-attribute <b>Note:</b> Available at the advanced privilege level.

7-Mode option	Clustered Data ONTAP command
ldap.nssmap.attribute.groupname	ldap client schema modify -cn-group-attribute <b>Note:</b> Available at the advanced privilege level.
ldap.nssmap.attribute.homeDirectory	ldap client schema modify -home-directory-attribute <b>Note:</b> Available at the advanced privilege level.
ldap.nssmap.attribute.loginShell	ldap client schema modify -login-shell-attribute <b>Note:</b> Available at the advanced privilege level.
ldap.nssmap.attribute.memberNisNetgroup	ldap client schema modify -member-nis-netgroup-attribute <b>Note:</b> Available at the advanced privilege level.
ldap.nssmap.attribute.memberUid	ldap client schema modify -member-uid-attribute <b>Note:</b> Available at the advanced privilege level.
ldap.nssmap.attribute.netgroupname	ldap client schema modify -cn-netgroup-attribute <b>Note:</b> Available at the advanced privilege level.
ldap.nssmap.attribute.nisNetgroupTriple	ldap client schema modify -nis-netgroup-triple-attribute <b>Note:</b> Available at the advanced privilege level.
ldap.nssmap.attribute.uid	ldap client schema modify -uid-attribute <b>Note:</b> Available at the advanced privilege level.
ldap.nssmap.attribute.uidNumber	ldap client schema modify -uid-number-attribute <b>Note:</b> Available at the advanced privilege level.
ldap.nssmap.attribute.userPassword	ldap client schema modify -user-password-attribute <b>Note:</b> Available at the advanced privilege level.
ldap.nssmap.objectClass.nisNetgroup	ldap client schema modify -nis-netgroup-object-class <b>Note:</b> Available at the advanced privilege level.
ldap.nssmap.objectClass.posixAccount	ldap client schema modify -posix-account-object-class <b>Note:</b> Available at the advanced privilege level.

7-Mode option	Clustered Data ONTAP command
ldap.nssmap.objectClass.posixGroup	ldap client schema modify -posix-group-object-class <b>Note:</b> Available at the advanced privilege level.
ldap.passwd	vserver services name-service ldap client modify-bind-password
ldap.port	vserver services name-service ldap client modify -port
ldap.servers	vserver services name-service ldap client modify -servers
ldap.servers.preferred	vserver services name-service ldap client modify -preferred-ad-servers
ldap.ssl.enable	Not supported
ldap.timeout	vserver services name-service ldap client modify -query-timeout
ldap.usermap.attribute.windowsaccount	ldap client schema modify -windows-account-attribute <b>Note:</b> Available at the advanced privilege level.
ldap.usermap.base	ldap client modify -user-dn <i>ldap DN</i> -user-scope <b>Note:</b> Available at the advanced privilege level.
ldap.usermap.enable	Not supported
licensed_feature.fcp.enable	Not supported
licensed_feature.flex_clone.enable	Not supported
licensed_feature.flexcache_nfs.enable	Not supported
licensed_feature.iscsi.enable	Not supported
licensed_feature.multistore.enable	Not supported
licensed_feature.nearstore_option.enable	Not supported
licensed_feature.vld.enable	Not supported
locking.grace_lease_seconds	vserver nfs modify -v4-grace-seconds
lun.clone_restore	Not supported
lun.partner_unreachable.linux.asc	Not supported
lun.partner_unreachable.linux.ascq	Not supported

7-Mode option	Clustered Data ONTAP command
lun.partner_unreachable.linux.behavior	Not supported
lun.partner_unreachable.linux.hold_time	Not supported
lun.partner_unreachable.linux.scsi_status	Not supported
lun.partner_unreachable.linux.skey	Not supported
lun.partner_unreachable.vmware.behavior	Not supported
lun.partner_unreachable.vmware.hold_time	Not supported

## N

7-Mode option	Clustered Data ONTAP command
ndmpd.abort_on_disk_error	options ndmpd.abort_on_disk_error <b>Note:</b> Available at the advanced privilege level.
ndmpd.access	system services firewall policy modify -policy * -service ndmp -allow-list
ndmpd.authtype	system services ndmpd modify -clear-text
ndmpd.connectlog.enabled	Not supported
ndmpd.data_port_range	Not supported
ndmpd.enable	Not supported
ndmpd.ignore_ctime.enabled	Not supported
ndmpd.maxversion	Not supported
ndmpd.offset_map.enable	Not supported
ndmpd.password_length	Not supported
ndmpd.preferred_interface	Not supported
ndmpd.tcpnodelay.enable	Not supported
ndmpd.tcpwinsize	Not supported
nfs.assist.queue.limit	Not supported
nfs.authsys.extended_groups_ns.enable	vserver nfs modify -auth-sys-extended-groups <b>Note:</b> Available at the advanced privilege level.
nfs.export.allow_provisional_access	Not supported

7-Mode option	Clustered Data ONTAP command
nfs.export.auto-update	Not supported
nfs.export.exportfs_comment_on_delete	Not supported
nfs.export.harvest.timeout	Not supported
nfs.export.neg.timeout	Not supported
nfs.kerberos.enable	vserver nfs kerberos realm create
nfs.kerberos.file_keytab.enable	Not supported
nfs.kerberos.file_keytab.principal	vserver nfs kerberos realm create
nfs.kerberos.file_keytab.realm	vserver nfs kerberos realm create
nfs.max_num_aux_groups	vserver nfs { show   modify } -extended-groups-limit
nfs.mount_rootonly	vserver nfs modify -mount-rootonly
nfs.netgroup.strict	Not supported
nfs.nfs_rootonly	vserver nfs modify -nfs-rootonly
nfs.per_client_stats.enable	statistics settings modify -client stats <b>Note:</b> Available at the advanced privilege level.
nfs.require_valid_mapped_uid	vserver name-mapping create
nfs.response.trace	vserver nfs modify -trace-enabled <b>Note:</b> Available at the advanced privilege level.
nfs.response.trigger	vserver nfs modify -trigger <b>Note:</b> Available at the advanced privilege level.
nfs.rpcsec.ctx.high	nfs modify -rpcsec-ctx-high <b>Note:</b> Available at the advanced privilege level.
nfs.rpcsec.ctx.idle	nfs modify -rpcsec-ctx-idle <b>Note:</b> Available at the advanced privilege level.
nfs.tcp.enable	vserver nfs modify -tcp
nfs.thin_prov.ejuke	vserver nfs modify -enable-ejukebox <b>Note:</b> Available at the advanced privilege level.
nfs.udp.enable	vserver nfs modify -udp

7-Mode option	Clustered Data ONTAP command
nfs.udp.xfersize	vserver nfs modify -udp-max-xfer-size <b>Note:</b> Available at the advanced privilege level.
nfs.v2.df_2gb_lim	Not supported
nfs.v2.enable	Not supported
nfs.v3.enable	vserver nfs modify -v3
nfs.v4.acl.enable	vserver nfs modify -v4.0-acl
nfs.v4.enable	vserver nfs modify -v4.0
nfs.v4.id.allow_numerics	vserver nfs modify -v4-numeric-ids
nfs.v4.id.domain	vserver nfs modify -v4-id-domain
nfs.v4.read_delegation	vserver nfs modify -v4.0-read-delegation
nfs.v4.write_delegation	vserver nfs modify -v4.0-write-delegation
nfs.vstorage.enable	vserver nfs modify -vstorage
nfs.webnfs.enable	Not supported
nfs.webnfs.rootdir	Not supported
nfs.webnfs.rootdir.set	Not supported
nis.domainname	vserver services name-service nis-domain modify -domain
nis.enable	vserver services name-service nis-domain modify -active
nis.group_update.enable	Not supported
nis.group_update_schedule	Not supported
nis.netgroup.domain_search.enable	Not supported
nis.servers	vserver services name-service nis-domain modify -servers
nis.slave.enable	Not supported
nlm.cleanup.timeout	Not supported

## P

7-Mode option	Clustered Data ONTAP command
pcnfsd.enable	Not supported
pcnfsd.umask	Not supported

## Q

7-Mode option	Clustered Data ONTAP command
qos.classify.count_all_matches	Not supported

## R

**Note:** All raid options have 7-Mode-compatible nodeshell shortcuts of the form `options optionname`.

7-Mode option	Clustered Data ONTAP command
raid	storage raid-options { modify   show }
raid.background_disk_fw_update.enable	storage disk option modify -bkg-firmware-update
raid.disk.copy.auto.enable	storage raid-options modify -raid.disk.copy.auto.enable
raid.disk.timeout.enable	system node run -node { <i>nodename</i>  local } options raid.disk.timeout.enable
raid.disktype.enable	Not supported
raid.lost_write.enable	raid-options modify raid.lost_write.enable <b>Note:</b> Available at the advanced privilege level.
raid.media_scrub.enable	storage raid-options { modify   show } -name raid.media_scrub.enable
raid.media_scrub.rate	storage raid-options { modify   show } -name raid.media_scrub.rate
raid.min_spare_count	storage raid-options { modify   show } -name raid.min_spare_count
raid.mix.hdd.disktype.capacity	storage raid-options { modify   show } -name raid.mix.hdd.disktype.capacity
raid.mix.hdd.disktype.performance	storage raid-options { modify   show } -name raid.mix.hdd.disktype.performance

7-Mode option	Clustered Data ONTAP command
raid.mix.hdd.rpm.capacity	storage raid-options { modify   show } -name raid.mix.hdd.rpm.capacity
raid.mix.hdd.rpm.performance	storage raid-options { modify   show } -name raid.mix.hdd.rpm.performance
raid.mirror_read_plex_pref	storage raid-options { modify   show } -name raid.mirror_read_plex_pref
raid.reconstruct.perf_impact	storage raid-options { modify   show } -name raid.reconstruct.perf_impact
raid.resync.perf_impact	storage raid-options { modify   show } -name raid.resync.perf_impact
raid.rpm.ata.enable	Not supported
raid.rpm.fcal.enable	Not supported
raid.scrub.duration	storage raid-options { modify   show } -name raid.scrub.duration
raid.scrub.perf_impact	storage raid-options { modify   show } -name raid.scrub.perf_impact
raid.scrub.schedule	storage raid-options { modify   show } -name raid.scrub.schedule
raid.timeout	storage raid-options { modify   show } -name raid.timeout
raid.verify.perf_impact	storage raid-options { modify   show } -name raid.verify.perf_impact
replication.logical.reserved_transfers	snapmirror set-options -xdp-source-xfer-reserve-pct
replication.throttle.enable	snapmirror modify -throttle
replication.volume.reserved_transfers	snapmirror set-options -dp-source-xfer-reserve-pct
replication.volume.use_auto_resync	Not supported
rpc.mountd.tcp.port	vserver nfs modify -mountd-port <b>Note:</b> Available at the advanced privilege level.
rpc.mountd.udp.port	vserver nfs modify -mountd-port <b>Note:</b> Available at the advanced privilege level.



7-Mode option	Clustered Data ONTAP command
rpc.nlm.tcp.port	vserver nfs modify -nlm-port <b>Note:</b> Available at the advanced privilege level.
rpc.nlm.udp.port	vserver nfs modify -nlm-port <b>Note:</b> Available at the advanced privilege level.
rpc.nsm.tcp.port	vserver nfs modify -nsm-port <b>Note:</b> Available at the advanced privilege level.
rpc.nsm.udp.port	vserver nfs modify -nsm-port <b>Note:</b> Available at the advanced privilege level.
rpc.pcnfsd.tcp.port	Not supported
rpc.pcnfsd.udp.port	Not supported
rpc.rquotad.udp.port	vserver nfs modify -rquotad-port <b>Note:</b> Available at the advanced privilege level.
rquotad.enable	vserver nfs modify -rquota
rsh.access	system services firewall policy create -policy mgmt -service rsh -allow-list
rsh.enable	system services firewall policy create -policy mgmt -service rsh -allow-list

## S

7-Mode option	Clustered Data ONTAP command
security.admin.authentication	security login modify
security.admin.nsswitchgroup	vserver modify
security.passwd.firstlogin.enable	security login role config modify
security.passwd.lockout.numtries	security login role config modify
security.passwd.rootaccess.enable	Not supported
security.passwd.rules.enable	security login role config modify
security.passwd.rules.everyone	security login role config modify
security.passwd.rules.history	security login role config modify

<b>7-Mode option</b>	<b>Clustered Data ONTAP command</b>
security.passwd.rules.maximum	security login role config modify
security.passwd.rules.minimum	security login role config modify
security.passwd.rules.minimum.alphabetic	Not supported
security.passwd.rules.minimum.digit	Not supported
security.passwd.rules.minimum.symbol	Not supported
sftp.auth_style	Not supported
sftp.dir_override	Not supported
sftp.dir_restriction	Not supported
sftp.enable	Not supported
sftp.idle_timeout	Not supported
sftp.locking	Not supported
sftp.log_enable	Not supported
sftp.log_filesize	Not supported
sftp.log_nfiles	Not supported
sftp.max_connections	Not supported
sftp.max_connections_threshold	Not supported
sftp.override_client_permissions	Not supported
shelf.atfcx.auto.reset.enable	system node run -node { <i>nodename</i>  local } options shelf.atfcx.auto.reset.enable
shelf.esh4.auto.reset.enable	system node run -node { <i>nodename</i>  local } options shelf.esh4.auto.reset.enable
shelf.fw.ndu.enable	system node run -node { <i>nodename</i>  local } options shelf.fw.ndu.enable
sis.max_vfiler_active_ops	Not supported
snaplock.autocommit_period	Not supported
snaplock.compliance.write_verify	Not supported
snaplock.log.default_retention	Not supported
snaplock.log.maximum_size	Not supported
snapmirror.access	snapmirror create

7-Mode option	Clustered Data ONTAP command
snapmirror.checkip.enable	Not supported
snapmirror.cmode.suspend	snapmirror quiesce
snapmirror.delayed_acks.enable	Not supported
snapmirror.vsm.volread.smtape_enable	Not supported
snapvalidator.version	Not supported
snapvault.access	vserver peer
snapvault.enable	Not supported
snapvault.lockvault_log_volume	Not supported
snapvault.preservesnap	snapmirror policy
snapvault.snapshot_for_dr_backup	Not supported
snmp.access	system services firewall policy modify -policy <i>policy name</i> -service snmp -allow-list
snmp.enable	Not supported
ssh.access	system services firewall policy modify -policy <i>policy name</i> -service ssh -allow-list
ssh.enable	system services firewall policy modify -policy <i>policy name</i> -service ssh -allow-list
ssh.idle.timeout	Not supported
ssh.passwd_auth.enable	security login { show   create   delete } -user-or-group-name <i>username</i> -application ssh -authmethod publickey -role <i>rolename</i> -vserver <i>vservername</i>
ssh.pubkey_auth.enable	security login modify -authmethod publickey
ssh1.enable	Not supported
ssh2.enable	Not supported
ssl.enable	security ssl modify -server -enabled
ssl.v2.enable	system services web modify -ssl2-enabled
ssl.v3.enable	system services web modify -ssl3-enabled
stats.archive.frequency_config	Not supported

## T

<b>7-Mode option</b>	<b>Clustered Data ONTAP command</b>
tape.reservations	options tape.reservations
telnet.access	system services firewall policy create -policy mgmt -service telnet -allow-list
telnet.distinct.enable	Not supported
telnet.enable	system services firewall policy create -policy mgmt -service telnet -allow-list
tftpd.enable	Not supported
tftpd.logging	Not supported
tftpd.max_connections	Not supported
tftpd.rootdir	Not supported
timed.enable	system services ntp config modify -enabled
timed.log	Not supported
timed.max_skew	Not supported
timed.min_skew	Not supported
timed.proto	Not supported
timed.sched	Not supported
timed.servers	cluster time-service ntp server
timed.window	Not supported
trusted.hosts	Not supported

## V

<b>7-Mode option</b>	<b>Clustered Data ONTAP command</b>
vol.move.cutover.cpu.busy.limit	Not supported
vol.move.cutover.disk.busy.limit	Not supported
vsm.smtape.concurrent.cascade.support	Not supported

## W

7-Mode option	Clustered Data ONTAP command
wafld.default_nt_user	vserver nfs modify -default-win-user
wafld.default_unix_user	vserver cifs options modify -default-unix-user
wafld.group_cp	system node run -node { <i>nodename</i>  local} options wafld.group_cp
wafld.inconsistent.asup_frequency.blks	system node run -node { <i>nodename</i>  local} options wafld.inconsistent.asup_frequency.blks
wafld.inconsistent.asup_frequency.time	system node run -node { <i>nodename</i>  local} options wafld.inconsistent.asup_frequency.time
wafld.inconsistent.ems_suppress	system node run -node { <i>nodename</i>  local} options wafld.inconsistent.ems_suppress
wafld.maxdirsize	vol create -maxdir-size <b>Note:</b> Available at the advanced privilege level.
wafld.nt_admin_priv_map_to_root	vserver name-mapping create
wafld.root_only_chown	vserver nfs modify -chown-mode <b>Note:</b> Available at the advanced privilege level.
wafld.wcc_minutes_valid	Not supported
webdav.enable	Not supported

**Related concepts**

*How to interpret the clustered Data ONTAP commands, options, and configuration files maps for 7-Mode administrators* on page 4

**Related references**

*How 7-Mode commands map to clustered Data ONTAP commands* on page 6

*How 7-Mode configuration files map to clustered Data ONTAP commands* on page 62

## How 7-Mode configuration files map to clustered Data ONTAP commands

In Data ONTAP operating in 7-Mode, you typically use flat files to configure the storage system. In clustered Data ONTAP, you use configuration commands. The table below shows how 7-Mode configuration files map to clustered Data ONTAP configuration commands.

7-Mode configuration file	Clustered Data ONTAP configuration command
<code>/etc/cifs_homedir.cfg</code>	<code>vserver cifs home-directory search-path</code>
<code>/etc/exports</code>	<code>vserver export-policy</code>
<code>/etc/hosts</code>	<code>vserver services dns hosts</code>
<code>/etc/hosts.equiv</code>	Not applicable. Use <code>security login</code> commands to create user access profiles.
<code>/etc/messages</code>	<code>event log show</code>
<code>/etc/motd</code>	Not applicable.
<code>/etc/nsswitch.conf</code>	<code>vserver modify</code>
<code>/etc/rc</code>	In clustered Data ONTAP, the retention of node configuration information processed at boot is transferred to other internal files that retain the configuration information. This contrasts with Data ONTAP operating in 7-Mode, in which features configured in memory are also retained in the <code>/etc/rc</code> file to be replayed at boot and reconfigured.
<code>/etc/quotas</code>	<code>volume quota</code>
<code>/etc/resolv.conf</code>	<code>vserver services dns modify</code>
<code>/etc/snapmirror.allow</code>	Intercluster relationships exist between two clusters. Intracluster relationships exist between two nodes on the same cluster. Authentication of the remote cluster occurs during the creation of the cluster peering relationship. Intracluster <code>snapmirror create</code> can be performed only by the cluster administrator to enforce per Storage Virtual Machine (SVM) security.
<code>/etc/snapmirror.conf</code>	<code>snapmirror create</code>
<code>/etc/symlink.translations</code>	<code>vserver cifs symlink</code>

7-Mode configuration file	Clustered Data ONTAP configuration command
/etc/usermap.cfg	vserver name-mapping create

**Related concepts**

*[How to interpret the clustered Data ONTAP commands, options, and configuration files maps for 7-Mode administrators](#) on page 4*

**Related references**

*[How 7-Mode commands map to clustered Data ONTAP commands](#) on page 6*

*[How 7-Mode options map to clustered Data ONTAP commands](#) on page 38*

## Copyright information

---

Copyright © 1994–2015 NetApp, Inc. All rights reserved. Printed in the U.S.

No part of this document covered by copyright may be reproduced in any form or by any means—graphic, electronic, or mechanical, including photocopying, recording, taping, or storage in an electronic retrieval system—without prior written permission of the copyright owner.

Software derived from copyrighted NetApp material is subject to the following license and disclaimer:

THIS SOFTWARE IS PROVIDED BY NETAPP "AS IS" AND WITHOUT ANY EXPRESS OR IMPLIED WARRANTIES, INCLUDING, BUT NOT LIMITED TO, THE IMPLIED WARRANTIES OF MERCHANTABILITY AND FITNESS FOR A PARTICULAR PURPOSE, WHICH ARE HEREBY DISCLAIMED. IN NO EVENT SHALL NETAPP BE LIABLE FOR ANY DIRECT, INDIRECT, INCIDENTAL, SPECIAL, EXEMPLARY, OR CONSEQUENTIAL DAMAGES (INCLUDING, BUT NOT LIMITED TO, PROCUREMENT OF SUBSTITUTE GOODS OR SERVICES; LOSS OF USE, DATA, OR PROFITS; OR BUSINESS INTERRUPTION) HOWEVER CAUSED AND ON ANY THEORY OF LIABILITY, WHETHER IN CONTRACT, STRICT LIABILITY, OR TORT (INCLUDING NEGLIGENCE OR OTHERWISE) ARISING IN ANY WAY OUT OF THE USE OF THIS SOFTWARE, EVEN IF ADVISED OF THE POSSIBILITY OF SUCH DAMAGE.

NetApp reserves the right to change any products described herein at any time, and without notice. NetApp assumes no responsibility or liability arising from the use of products described herein, except as expressly agreed to in writing by NetApp. The use or purchase of this product does not convey a license under any patent rights, trademark rights, or any other intellectual property rights of NetApp.

The product described in this manual may be protected by one or more U.S. patents, foreign patents, or pending applications.

**RESTRICTED RIGHTS LEGEND:** Use, duplication, or disclosure by the government is subject to restrictions as set forth in subparagraph (c)(1)(ii) of the Rights in Technical Data and Computer Software clause at DFARS 252.277-7103 (October 1988) and FAR 52-227-19 (June 1987).



## Trademark information

---

NetApp, the NetApp logo, Go Further, Faster, ASUP, AutoSupport, Campaign Express, Cloud ONTAP, clustered Data ONTAP, Customer Fitness, Data ONTAP, DataMotion, Fitness, Flash Accel, Flash Cache, Flash Pool, FlashRay, FlexArray, FlexCache, FlexClone, FlexPod, FlexScale, FlexShare, FlexVol, FPolicy, GetSuccessful, LockVault, Manage ONTAP, Mars, MetroCluster, MultiStore, NetApp Insight, OnCommand, ONTAP, ONTAPI, RAID DP, SANtricity, SecureShare, Simplicity, Simulate ONTAP, Snap Creator, SnapCopy, SnapDrive, SnapIntegrator, SnapLock, SnapManager, SnapMirror, SnapMover, SnapProtect, SnapRestore, Snapshot, SnapValidator, SnapVault, StorageGRID, Tech OnTap, Unbound Cloud, and WAFL are trademarks or registered trademarks of NetApp, Inc., in the United States, and/or other countries. A current list of NetApp trademarks is available on the web at <http://www.netapp.com/us/legal/netapptmlist.aspx>.

Cisco and the Cisco logo are trademarks of Cisco in the U.S. and other countries. All other brands or products are trademarks or registered trademarks of their respective holders and should be treated as such.

## How to send comments about documentation and receive update notification

---

You can help us to improve the quality of our documentation by sending us your feedback. You can receive automatic notification when production-level (GA/FCS) documentation is initially released or important changes are made to existing production-level documents.

If you have suggestions for improving this document, send us your comments by email to [doccomments@netapp.com](mailto:doccomments@netapp.com). To help us direct your comments to the correct division, include in the subject line the product name, version, and operating system.

If you want to be notified automatically when production-level documentation is released or important changes are made to existing production-level documents, follow Twitter account @NetAppDoc.

You can also contact us in the following ways:

- NetApp, Inc., 495 East Java Drive, Sunnyvale, CA 94089 U.S.
- Telephone: +1 (408) 822-6000
- Fax: +1 (408) 822-4501
- Support telephone: +1 (888) 463-8277