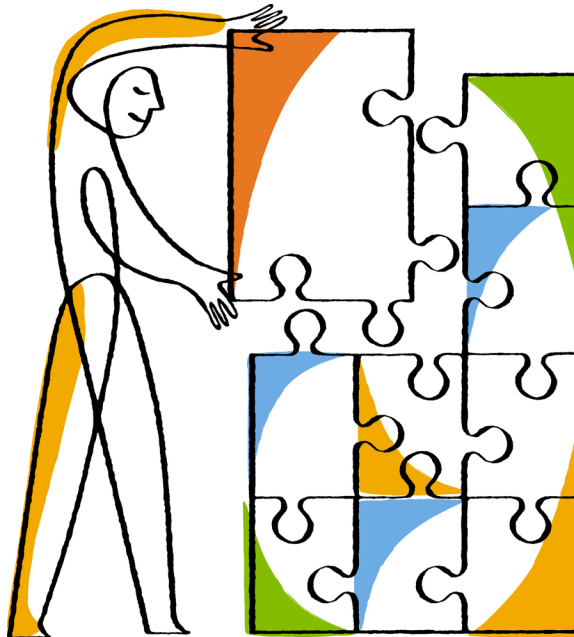




Data ONTAP[®] SMI-S Agent 5.1

Information Roadmap



NetApp, Inc.
495 East Java Drive
Sunnyvale, CA 94089
U.S.

Telephone: +1 (408) 822-6000
Fax: +1 (408) 822-4501
Support telephone: +1 (888) 463-8277
Web: www.netapp.com
Feedback: doccomments@netapp.com

Part number: 215-08609_A0
January 2014

Contents

Information roadmap	4
Internal resources	4
External resources	5
Copyright information	6
Trademark information	7
How to send your comments	8
Index	9

Information roadmap

You can follow links to documentation and resources available for Data ONTAP SMI-S Agent 5.1, including best practice guides, installation and configuration guides, technical reports, Microsoft documentation, and the Interoperability Matrix.

Internal resources

You can use user guides and best practices guides to help you use Data ONTAP SMI-S Agent 5.1.

User guides

For complete user guides, references, and release notes, see these resources on the NetApp Support Site:

- *Data ONTAP SMI-S Agent 5.1 Installation and Configuration Guide*: [PDF](#) or [HTML](#).
- *Data ONTAP SMI-S Agent 5.1 Release Notes*: [PDF](#).

Best practices guides

For best practice information, go to the the NetApp Support Site at support.netapp.com or netapp.com and search for the TR number.

- *Data ONTAP SMI-S Agent 5.1 Best Practices Guide*: TR-4205

The *Best Practices Guide* contains documentation on using Data ONTAP SMI-S Agent 5.1 with System Center Virtual Machine Manager (SCVMM).

Troubleshooting

For complete troubleshooting information, see these resources:

- Bugs Online on the NetApp Support Site at support.netapp.com/NOW/cgi-bin/bol
- The Knowledgebase at kb.netapp.com

System configuration information

For complete system configuration and interoperability information, see this resource:

- The Interoperability Matrix at support.netapp.com/matrix.

External resources

You can use external resources for reference information and tasks related to non-Data ONTAP SMI-S Agent workflows.

Microsoft

- Microsoft TechNet: <http://technet.microsoft.com>
- Configuring an SMI-S Provider for iSCSI Target Server: <http://technet.microsoft.com/en-us/library/jj860422.aspx>
- Deploying System Center 2012 - Virtual Machine Manager: <http://technet.microsoft.com/EN-US/LIBRARY/GG610669.ASPX>
- Install and Deploy Windows Server 2012: <http://technet.microsoft.com/en-us/library/hh831620.aspx>
- Configuring Storage in SCVMM for SAN and NAS protocols: <http://technet.microsoft.com/en-us/library/gg610600.aspx>

SNIA

- Storage Networking Industry Association (SNIA): <http://www.snia.org/home>
- Storage Management Initiative Specification (SMI-S) Releases: http://www.snia.org/tech_activities/standards/curr_standards/smi

Other

- Distributed Management Task Force (DMTF): <http://www.dmtf.org/home>

Copyright information

Copyright © 1994–2014 NetApp, Inc. All rights reserved. Printed in the U.S.

No part of this document covered by copyright may be reproduced in any form or by any means—graphic, electronic, or mechanical, including photocopying, recording, taping, or storage in an electronic retrieval system—without prior written permission of the copyright owner.

Software derived from copyrighted NetApp material is subject to the following license and disclaimer:

THIS SOFTWARE IS PROVIDED BY NETAPP "AS IS" AND WITHOUT ANY EXPRESS OR IMPLIED WARRANTIES, INCLUDING, BUT NOT LIMITED TO, THE IMPLIED WARRANTIES OF MERCHANTABILITY AND FITNESS FOR A PARTICULAR PURPOSE, WHICH ARE HEREBY DISCLAIMED. IN NO EVENT SHALL NETAPP BE LIABLE FOR ANY DIRECT, INDIRECT, INCIDENTAL, SPECIAL, EXEMPLARY, OR CONSEQUENTIAL DAMAGES (INCLUDING, BUT NOT LIMITED TO, PROCUREMENT OF SUBSTITUTE GOODS OR SERVICES; LOSS OF USE, DATA, OR PROFITS; OR BUSINESS INTERRUPTION) HOWEVER CAUSED AND ON ANY THEORY OF LIABILITY, WHETHER IN CONTRACT, STRICT LIABILITY, OR TORT (INCLUDING NEGLIGENCE OR OTHERWISE) ARISING IN ANY WAY OUT OF THE USE OF THIS SOFTWARE, EVEN IF ADVISED OF THE POSSIBILITY OF SUCH DAMAGE.

NetApp reserves the right to change any products described herein at any time, and without notice. NetApp assumes no responsibility or liability arising from the use of products described herein, except as expressly agreed to in writing by NetApp. The use or purchase of this product does not convey a license under any patent rights, trademark rights, or any other intellectual property rights of NetApp.

The product described in this manual may be protected by one or more U.S. patents, foreign patents, or pending applications.

RESTRICTED RIGHTS LEGEND: Use, duplication, or disclosure by the government is subject to restrictions as set forth in subparagraph (c)(1)(ii) of the Rights in Technical Data and Computer Software clause at DFARS 252.277-7103 (October 1988) and FAR 52-227-19 (June 1987).

Trademark information

NetApp, the NetApp logo, Network Appliance, the Network Appliance logo, Akorri, ApplianceWatch, ASUP, AutoSupport, BalancePoint, BalancePoint Predictor, Bypass, Campaign Express, ComplianceClock, Cryptainer, CryptoShred, CyberSnap, Data Center Fitness, Data ONTAP, DataFabric, DataFort, Decru, Decru DataFort, DenseStak, Engenio, Engenio logo, E-Stack, ExpressPod, FAServer, FastStak, FilerView, Flash Accel, Flash Cache, Flash Pool, FlashRay, FlexCache, FlexClone, FlexPod, FlexScale, FlexShare, FlexSuite, FlexVol, FPolicy, GetSuccessful, gFiler, Go further, faster, Imagine Virtually Anything, Lifetime Key Management, LockVault, Manage ONTAP, Mars, MetroCluster, MultiStore, NearStore, NetCache, NOW (NetApp on the Web), Onaro, OnCommand, ONTAPI, OpenKey, PerformanceStak, RAID-DP, ReplicatorX, SANscreen, SANshare, SANtricity, SecureAdmin, SecureShare, Select, Service Builder, Shadow Tape, Simplicity, Simulate ONTAP, SnapCopy, Snap Creator, SnapDirector, SnapDrive, SnapFilter, SnapIntegrator, SnapLock, SnapManager, SnapMigrator, SnapMirror, SnapMover, SnapProtect, SnapRestore, Snapshot, SnapSuite, SnapValidator, SnapVault, StorageGRID, StoreVault, the StoreVault logo, SyncMirror, Tech OnTap, The evolution of storage, Topio, VelocityStak, vFiler, VFM, Virtual File Manager, VPolicy, WAFL, Web Filer, and XBB are trademarks or registered trademarks of NetApp, Inc. in the United States, other countries, or both.

IBM, the IBM logo, and ibm.com are trademarks or registered trademarks of International Business Machines Corporation in the United States, other countries, or both. A complete and current list of other IBM trademarks is available on the web at www.ibm.com/legal/copytrade.shtml.

Apple is a registered trademark and QuickTime is a trademark of Apple, Inc. in the United States and/or other countries. Microsoft is a registered trademark and Windows Media is a trademark of Microsoft Corporation in the United States and/or other countries. RealAudio, RealNetworks, RealPlayer, RealSystem, RealText, and RealVideo are registered trademarks and RealMedia, RealProxy, and SureStream are trademarks of RealNetworks, Inc. in the United States and/or other countries.

All other brands or products are trademarks or registered trademarks of their respective holders and should be treated as such.

NetApp, Inc. is a licensee of the CompactFlash and CF Logo trademarks.

NetApp, Inc. NetCache is certified RealSystem compatible.

How to send your comments

You can help us to improve the quality of our documentation by sending us your feedback.

Your feedback is important in helping us to provide the most accurate and high-quality information. If you have suggestions for improving this document, send us your comments by email to doccomments@netapp.com. To help us direct your comments to the correct division, include in the subject line the product name, version, and operating system.

You can also contact us in the following ways:

- NetApp, Inc., 495 East Java Drive, Sunnyvale, CA 94089 U.S.
- Telephone: +1 (408) 822-6000
- Fax: +1 (408) 822-4501
- Support telephone: +1 (888) 463-8277

Index

H

help

- resources [5](#)
- troubleshooting [5](#)

R

resources

- DMTF [5](#)
- external [5](#)

Microsoft TechNet [5](#)

SCVMM [5](#)

SMI-S [5](#)

SMI-S Agent best practice guides [4](#)

SMI-S Agent KB articles [4](#)

SMI-S Agent troubleshooting information [4](#)

SMI-S Agent user guides [4](#)

SNIA [5](#)

System Center Virtual Machine Manager [5](#)

System Center VMM [5](#)